

Fab & Fix

Craftsman Stay Bar Fitting Instructions

To fit the casement stay you will need a crosshead screwdriver or drill, 3mm drill bit & pencil.

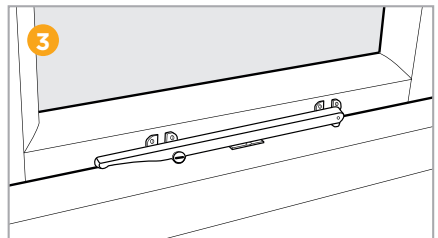
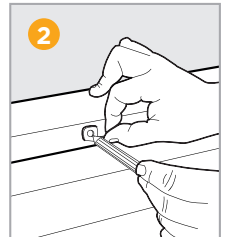
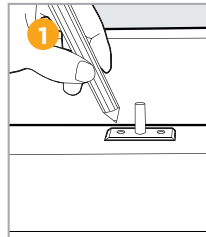
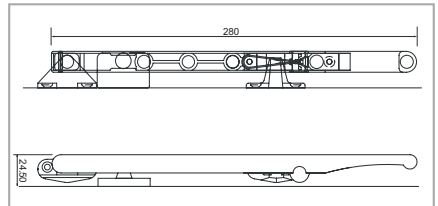
Note: Please choose to install the stay on either 'Right-hand side' or 'Left-hand side' of the window before following the instructions.

- 1 Mark the location of the Pin on the bottom window frame. The centre of the left screw hole must be 126mm from left window frame and 13mm from the edge of the bottom window frame.

Drill the hole using 3mm drill bit and install the pin.

Note: For right hand, install the pin at 126mm from right window frame using right screw hole of the pin.

- 2 Mark the location of the Fixing Bracket on the window sash. The centre of the right screw hole of bracket must be 25mm from centre of left screw hole of the Pin. The height of the screw hole must be 13mm from the bottom window frame.
- 3 Ensure the stay rests well on the clip without any movement. Install the brackets.



**TECHNICAL
HELPLINE**

01922 490 050