



DFNKNED Decorative Door Knocker Fitting Instructions

Installing a Decorative Door Knocker

To fit a door knocker you will require the following tools:

- Pencil
- Tape Measure
- Screwdriver
- Drill and Drill bits

Caution

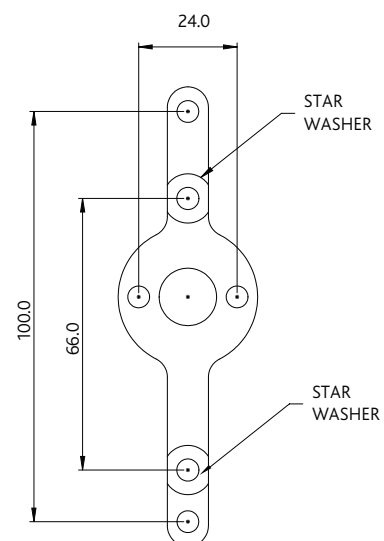
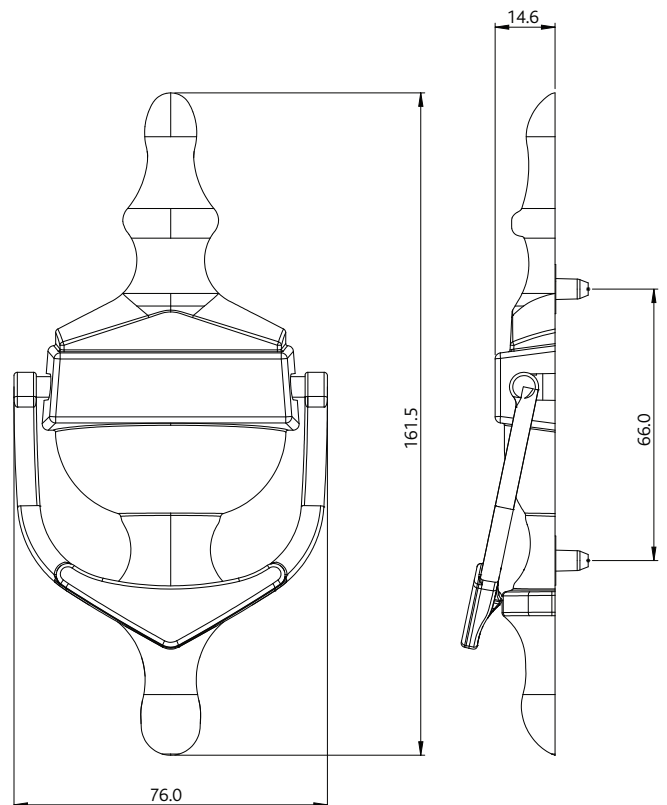
This knocker fits to the door profile using a face fixing plate for ease of installation, this is unseen when the knocker is fitted to the door. Please use a tape measure / rule and square to correctly position the knocker on the door. Please check the knocker is in the desired location before marking any holes.

- A** Ensure that the fixing plate has retained the two star washers and place the fixing plate correct side up with the attached washers facing the door.
- B** With the fixing plate correctly located, mark the fixing holes with a pen or pencil (6 holes in total unless fitting a spyhole viewer). If available always use a drill punch to mark drilling positions using the pencil marks as a guide. The indent made by the point will ensure the drill does not slip.

NB: If fitting to PVCu profile, pre-drill the fixing holes ensuring the drill bit pierces the steel reinforcement. If fitting to timber drill to a maximum depth of 15mm. You will require both a 2mm drill bit and a 5mm drill bit.

The two holes with washers underneath will require a 5mm drill bit. The four counter-sunk holes will require a 2mm drill bit.

- C** Place the bracket in the correct place with the two washers sitting over the 5mm drilled holes. Screw into place using 3.5mm PVCu screws into the three counter-sunk holes on the bracket. Once screwed into place the knocker can be pushed onto the bracket ensuring the fixing lugs enter the washers. The knocker may require a gentle tapping to ensure good fit and alignment.



Additional Information

Maintenance - Knockers should be cleaned with a soft dry cloth. If further cleaning is required we recommend a mild solution of warm, soapy water on a soft cloth. Dry thoroughly afterwards.

All dimensions are in mm and are nominal.
ERA reserves the right to change specification without notice. It is the responsibility of the door manufacturer to ensure that the finished product meets any required safety and performance specification.