

ERA

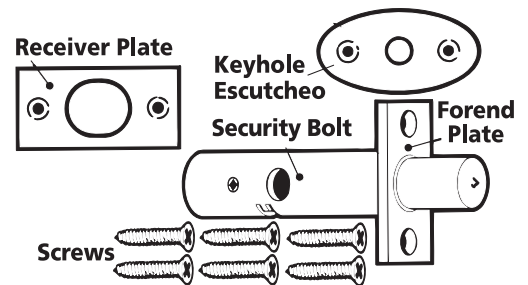
837-32 Window Security Bolt Fitting Instructions

Installing a Window Security Bolt

To fit a Window Security Bolt you will require the following tools:

- Drill
- 12.5mm drill bit
- Flat blade screwdriver
- Pencil

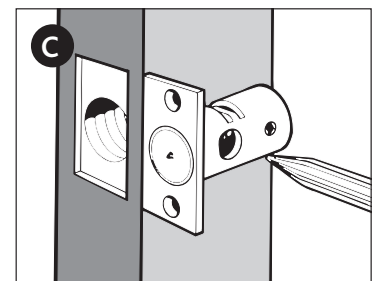
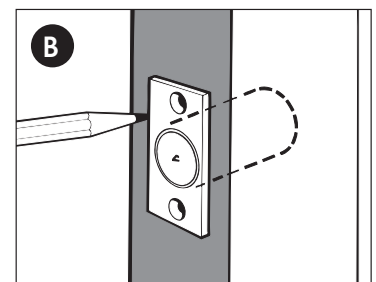
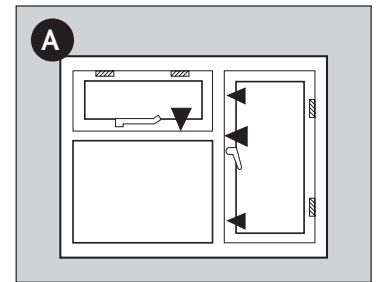
Note: Purchase key separately (ERA Ref: 506-52).



- A** Select position of Window Security Bolt. Open window and mark the hole position in the centre of the window frame. Drill a 16mm hole to a depth of 38mm:
- ◀ Position if fitting with a single lock
 - ◀ Position if fitting with two locks

- B** Place Window Security Bolt in the hole, mark position to forend plate and recess ensuring its flush with the frame.

- C** Remove Window Security Bolt. Mark position of keyhole on the inside of the window. Key operation should be from the inside only. Drill an 8mm hole through half the thickness of window frame, plus a further 9mm from the inside. Place Window Security Bolt in hole and screw forend plate to window frame edge. Test working operation and fit keyhole escutcheon. Close window. Turn bolt with key to mark the hole centre to the fixed frame. Drill a 16mm hole to a depth of 8mm in the fixed frame. Screw the receiver plate to the frame (recess if necessary).



Additional Information

Operation - Turn the key to lock / unlock.

Safety Tip - For child safety fit ERA Window Securistay Ref: 720, to restrict full opening.

Security Tip - Always close and lock windows, removing keys from locks when leaving the house. Use 2 locks per window for added security.

Maintenance - Use moist cloth only.