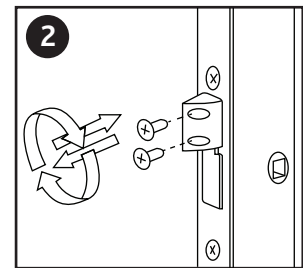
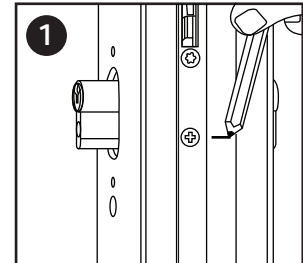




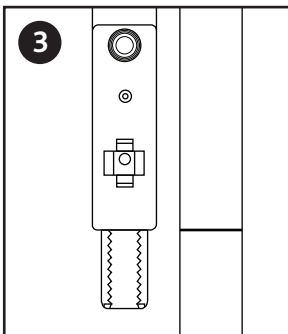
## Replacement Lock Fitting Instructions

### (Please read before installation)

- 1) Remove existing door handles and the spindle
- 2) Mark the position of the key cylinder screw with a pencil mark on the edge of the door (see Fig 1)
- 3) Remove the key cylinder, please note which way around it is (one side may be longer than the other)
- 4) Remove the old lock from the door, clean down the edge making sure you still have the cylinder lock mark. Also, remove all keeps from the frame
- 5) Offer the Replacement Gearbox up to the door edge locating it into previous slot. It may not fit into the door first time and plastic / timber may have to be cut out of the slot to allow it to locate properly. You must re-align the lock cylinder screw hole with that of the pencil mark on the edge of the door



**NOTE: Please check the latch curve is the correct way, if not remove the 2 screws in the latch bolt. Pull out the latch bolt, rotate it ½ turn then immediately replace it back in the lock. Refit the screw and re-tighten firmly (see Fig 2)**



- 6) Off the hook & roller (PVCu) or hook only extension (timber/composite) to the door edge locating it into the groove, ensuring the hook boxes sit in the existing apertures
  - FIRSTLY - With the hooks NOT thrown (unlocked), mark the face bar of the extension piece at the point where the face bar of the gearbox section meet. (see Fig 3) Carefully cut the face bar only at the stage. DO NOT cut the drive bar (teeth) at this stage
  - SECONDLY - Measure 22mm from the end of the face bar you gave just cut and trim the drive bar (teeth) - repeat for the bottom bar

- 7) Insert the newly cut top extension bar teeth into the receiving block ensuring the face bars meet, secure in place.
  - A) Repeat on the bottom bar and secure all 3 components in place using screws provided
- 8) On each end of the gearbox sections slide the cover up (top bar) and down (bottom bar) to the point where the fixing holes are visible then secure with the screws provided
- 9) Re-insert the cylinder making sure it's inserted the right way
- 10) Refit the handles and spindle to the door
- 11) Throw the lock by lifting the handle upwards 45 degrees, the action should be smooth
- 12) Pull the handle down 45 degrees
- 13) Gently close the door to check that it will close and open smoothly

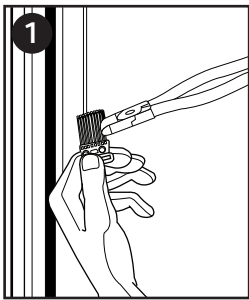


## Replacement Lock Fitting Instructions

### Fitting the Keeps

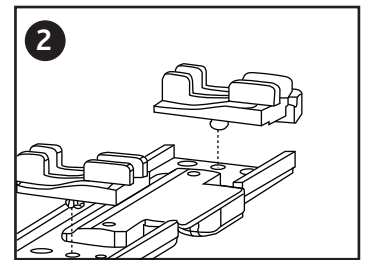
#### PVCu Keeps

The PVCu keeps use packers to locate onto the frame. The packers need to be configured to suit the frame profile



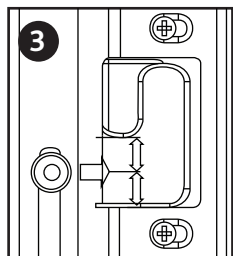
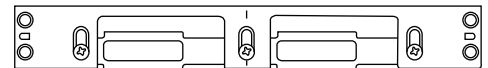
1) To configure the packer, hold one to the frame, the small 'flags' of the packer have to be pushed into the packer body except where the 'tongue' of the frame is. With one made up hold the packer to the frame, if correct continue with remaining packers or amend accordingly. The flags not used are cut off (Fig 1)

2) The packers are then snapped into the keeps 'U' channel (Fig 2)



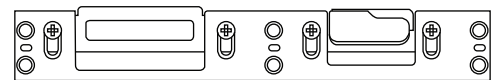
**NOTE: There is a special packer for each end**

3) To fit the centre keep, slightly close the door and with a pencil, mark the door frame edge line with the datum line on the lock face bar (this is located under the ERA snib). Open the door and locate the centre keep, matching the datum line (centre of the keep) to the pencil mark previously drawn, ensuring the adjustable plates are located to the front face of the frame. Plastic may have to be cut out of the frame to allow it to locate properly



4) Screw the keep in place using the screws provided

5) Locate top hook and roller keep, ensuring the roller keep 'mouth' is centrally positioned when closing the door (Fig 3)



6) Screw the keep in place using the screws provided; repeat process for bottom hook and roller keep

**NOTE: Keep adjustment. Keeps may be adjusted to give better seal compression. Firstly loosen keep retaining screws and slide the keep insert on its slotted screw holes, then re-tighten using a hand-screwdriver. Roller may be rotated  $\pm 1/4$  of a turn**

1. To fit the centre keep, slightly close the door and with a pencil, mark the door frame edge line with the datum line on the lock face bar (this is located under the ERA snib). Open the door and locate the centre keep, matching the centre fixing hole to the pencil mark previously drawn, ensuring the curved end is located to the front face of the frame. Timber may have to be cut out of the frame to allow it to locate properly.

2. Screw the keep in place using the screws provided

3. Locate hook keeps, ensuring the hooks will engage - nominal clearance of 3mm from hook throat to keep aperture (measured vertically when locked - Fig 4)

4. Screw the keeps in place using the screws provided

