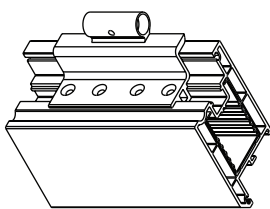




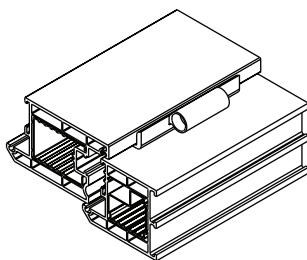
Challenger 3D Euro Groove Butt Hinge PVCu Door Fitting Instructions

Installing a Challenger 3D Butt Hinge

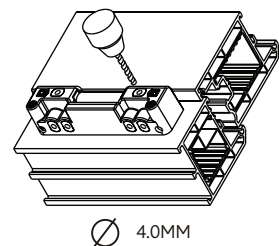
- 1** Mark and fit the flag to the sash.
Trim the gasket prior to fitting
if necessary



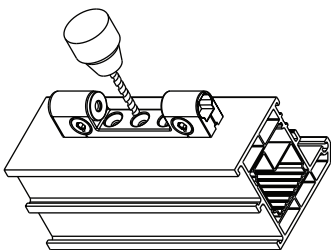
- 2** Lower the sash into the frame,
ensure correct placement,
clamp if necessary



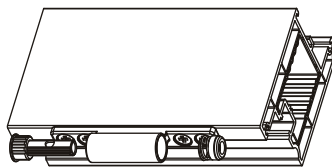
- 3** Clip jig under flag barrel. Drill
the two holes for the hinge pins



- 4** Lift the sash clear, fit the hinge
body and either pre-drill or fix
with self-drilling screws

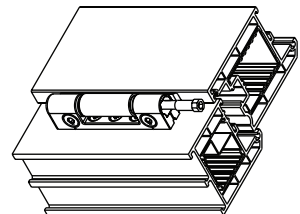


- 5** Fit the two main bushes into the
flag barrel (sprung bush to the top)



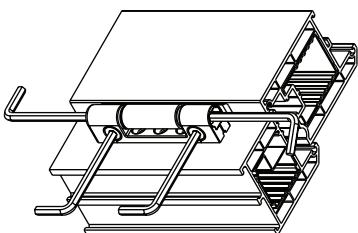
- 6** Lower the sash into the frame
allowing the flag barrel to
locate into the hinge body

Fit the hinge pin until the head
is below the height of the top
of the hinge body

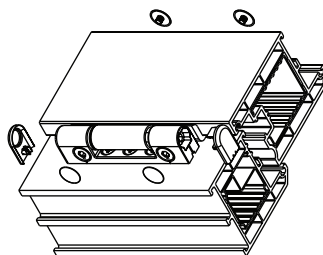


- 7** Lateral and vertical adjustment are
pre-set. The hinge pin should be set
so that the alignment mark points
towards the sash

other adjustments can be made as
necessary



- 8** Fit cover caps if required.
Top cap must be fitted as it
locks the hinge pin in place



- 9** If required fit the security
screw. Do not over-tighten

