

### Constant Force

#### Features

- Suitable for most PVCu profiles
- Smooth operation suitable for light duty application
- Single, double, triple and quad spring variants
- Multiple spring strengths
- Suit sash weights up to 28kg (62lbs)
- Spring assemblies and shoe require insertion into the jamb channel, prior to welding
- Flexible modular balance system
- Compatible with tilt systems only

#### A Constant Force

The easy to fit, modular construction gives a flexible balance system that suits sashes up to 28kgs (62lbs). One or more constant force springs are retained within the housing which is then attached to the outerframe, with the shoe, and the restrictor.

For light duty, cost effective applications Constant Force are smooth, quiet and easy to use with no need for adjustments or tensioning.

#### An Egress Solution

The unique design and intended fitting position of the Constant Force balance allows for the bottom sash (fitted with High Security Cam Locks, Tilt Restrictors and Guide Catches) to move up past the midrail of the sash for egress/ fire escape applications.

The additional bottom sash movement and opening clearances also accommodate for maximum sash travel and facilitate larger egress openings that conform to Building Regulations.

#### Hardware and Accessories

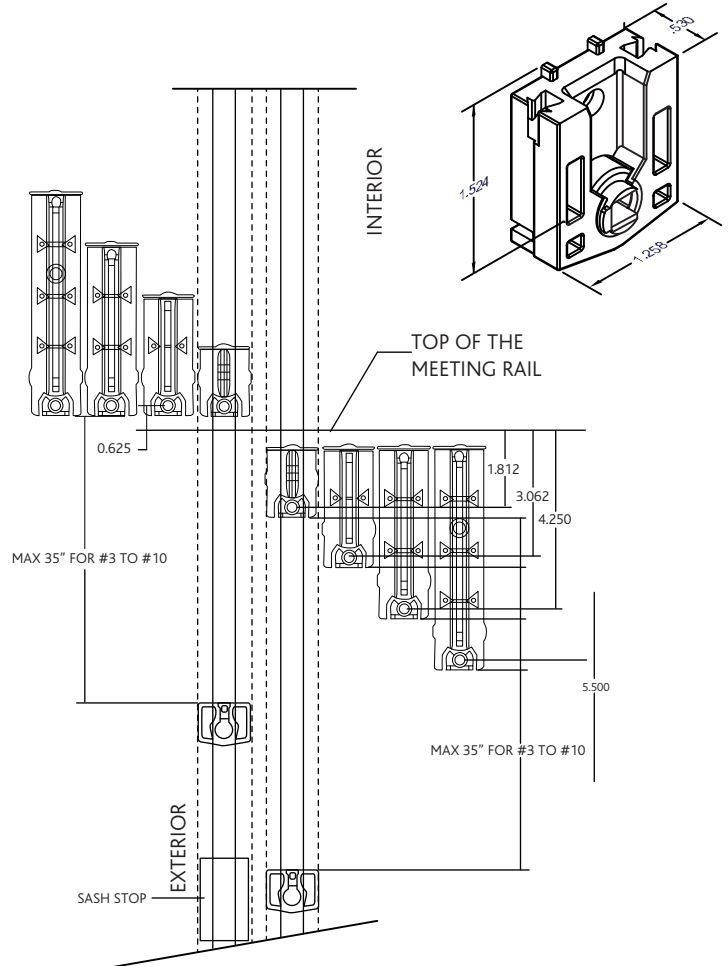
ERA also offer a range of hardware and accessories to complement the balance range including Cam Locks, High Security Cam Locks, Sash Eyes, Guide Catches, Bow Handles, Sash Knobs, Tilt Restrictors.



### Constant Force

#### Weight Ranges

Weight Range (lbs)	Part Numbers			
	Coil 1	Coil 2	Coil 3	Coil 4
4	801004			
4.5	801004			
5	801005			
5.5	801005			
6	801006			
6.5	801006			
7	801007FT			
7.5	801007FT			
8	801009			
8.5	801009			
9	801009			
9.5	801004	801005		
10	801004	801005		
10.5	801005	801005		
11	801005	801005		
11.5	801005	801006		
12	801005	801006		
12.5	801006	801006		
13	801006	801006		
13.5	801006	801007FT		
14	801006	801007FT		
14.5	801007FT	801007FT		
15	801007FT	801007FT		
15.5	801006	801009		
16	801009	801007FT		
16.5	801009	801007FT		
17	801007FT	801005	801004	
17.5	801007FT	801005	801004	
18	801009	801009		
18.5	801003	801006	801009	
19	801003	801006	801009	
19.5	801005	801006	801007FT	
20	801005	801005	801009	
20.5	801005	801006	801009	
21	801005	801006	801009	
21.5	801006	801006	801009	
22	801009	801006	801006	
22.5	801007FT	801007FT	801007FT	
23	801003	801007FT	801006	
23.5	801009	801007FT	801007FT	
24	801009	801007FT	801007FT	
24.5	801009	801009	801006	
25	809009	801004	801005	801006
25.5	801009	801004	801005	801006
26	801006	801006	801006	801006
26.5	801009	801005	801005	801006
27	801009	801005	801006	801006
27.5	801009	801005	801006	801006
28	801009	801006	801006	801006
28.5	801009	801006	801006	801006
29	801009	801009	801007FT	801003
29.5	801007FT	801007FT	801009	801005
30	801009	801009	801007FT	801004
Universal Supports	801010	801020	801030	801040
Tilt Shoe	501052	Egress Tilt Shoe	501052E	



#### Applications

Constant Force Balance assemblies are required for each side of a sash. The balances are housed in a groove in the outer frame jamb.

#### Technical Specification

##### Performance

AAMA certified balances, performance tested to 4,000 cycles