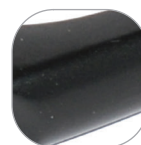


### Decorative Letters A - C



### Features

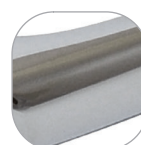
- Stylish letters for any front door
- Simple and quick installation
- Supplied with screws
- Available in a range of popular finishes
- Colour coordinated screw heads
- Suitable for PVCu, composite and timber doors
- Part of the ERA Decorative furniture range



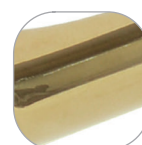
Black



White



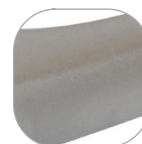
Polished  
Chrome



Polished  
Gold



Anthracite  
Grey



Satin  
Chrome

## Decorative Letters A - C

### Ordering Details

#### Product

#### Part No.

#### Decorative Letters

Finish	A	B	C
White	DFNEDLTWH-A	DFNEDLTWH-B	DFNEDLTWH-C
Black	DFNEDLTBK-A	DFNEDLTBK-B	DFNEDLTBK-C
Polished Gold	DFNEDLTPG-A	DFNEDLTPG-B	DFNEDLTPG-C
Polished Chrome	DFNEDLTPC-A	DFNEDLTPC-B	DFNEDLTPC-C
Satin Chrome	DFNEDLTSC-A	DFNEDLTSC-B	DFNEDLTSC-C
Anthracite Grey	DFNEDLTAG-A	DFNEDLTAG-B	DFNEDLTAG-C

For additional part numbers please contact our sales office.

### Technical Information

#### Corrosion resistance

Meets the requirements of BS EN 1670 Grade 4 (240 hours)

#### Material Specification

Letters:	High quality Zinc casting
Coatings:	White, Black and Anthracite Grey powder painted coated. Polished Gold, Chrome and Satin Chrome Plate electroplated
Screws:	Includes 2 X M3.5 x 25mm colour coordinated countersunk flat head screw

### Maintenance

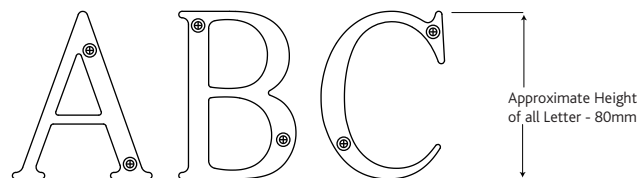
For continued protection of the quality finish and appearance, we advise routine cleaning of all our external hardware. We recommend wiping it with a clean cloth soaked in warm water and mild detergent every month. Please refrain from using heavy-duty cleaners, containing Chlorine or Potassium. Moving parts should also be lightly lubricated using a light non-acidic mineral oil (e.g., "3 in 1") at least twice per year. The product may need to be adjusted and fixings tightened to ensure a satisfactory operation. This procedure is particularly essential if products are used within a 25-mile radius of coastal areas or close proximity to building sites or large industrial areas, where more frequent cleaning may be required to prevent the accumulation of corrosive contaminants.

### Packaging

#### Letters

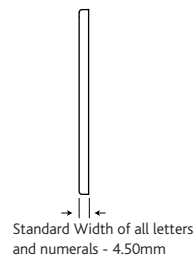
Individually bagged with screws.

10 letters in an inner box. 100 letters in an outer box.



Approximate Height of all Letter - 80mm

2 x Screws Provided Per Letter



Standard Width of all letters and numerals - 4.50mm

All dimensions are in mm and are nominal. ERA reserves the right to change specification without notice. It is the responsibility of the door manufacturer to ensure that the finished product meets any required safety and performance specification.