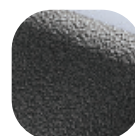


Large Decorative Door Knob



Features

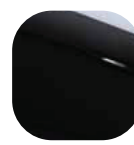
- **100mm diameter large knob**
Fits most door types
- **Supplied in either through fix or concealed fix specifications**
All fixing options covered
- **A highly secure and robust fixing**
Designed to meet the life-cycle of the door
- **All parts, tools and fixings supplied within one package**
Parts to hand for a quick and easy fixing
- **Colour co-ordinated internal bolt for through fix**
That final perfectly matching touch
- **Bolt fixing can be cut to size**
Will suit all standard depth doors
- **Designed for Composite, Timber, PVCu and Aluminium doors**
To suit all door materials
- **Available in the complete range of Hardex finishes**
Perfectly matching to the full Fab&Fix range of products



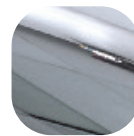
Antique
Black



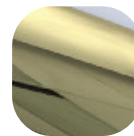
Anthracite
Grey



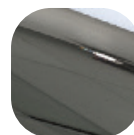
Black



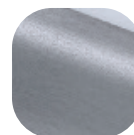
Hardex
Chrome



Hardex
Gold



Hardex
Bronze



Hardex
Graphite



Through Fix



Concealed Fix

Large Decorative Door Knob

Ordering Details

Product

Large Decorative Door Knob

Finish	Through Fix Part No.	Concealed Fix Part No.
Black	DFNKB100TFBK	DFNKB100CFBK
Anthracite Grey	DFNKB100TFAG	DFNKB100CFAG
Hardex Chrome	DFNKB100TFHC	DFNKB100CFHC
Hardex Bronze	DFNKB100TFHB	DFNKB100CFHB
Hardex Gold	DFNKB100TFHG	DFNKB100CFHG
Hardex Graphite	DFNKB100TFGR	DFNKB100CFGR
Antique Black	DFNKB100TFAB	DFNKB100CFAB

Technical Information

Corrosion resistance

Meets the requirements of BS EN 1670:2007 Grade 5 (480 hours)

Performance

Pull test - 800N

Material Specification

Handle Grip and Backplate:	High quality Zinc
Coatings:	Hardex Chrome, Hardex Bronze, Hardex Gold, Hardex Graphite, Anthracite Grey, Antique Black, and Black
Bolts:	Mild Steel. Through Fix - 120mm bolt Concealed Fix - 40mm bolt
Fixing Brackets:	Mild Steel
Recommended Screws*:	3x Self Drilling 3.5 X 30mm Screws (for Concealed Fix bracket)

*Not included

Maintenance

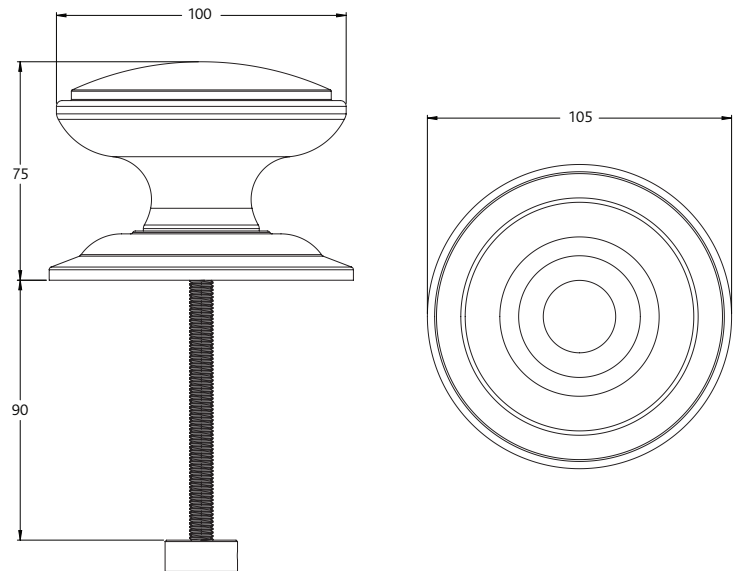
For continued protection of the quality finish and appearance, we advise routine cleaning of all our external hardware. We recommend wiping it with a clean cloth soaked in warm water and mild detergent every month. Please refrain from using heavy-duty cleaners, containing Chlorine or Potassium. Moving parts should also be lightly lubricated using a light non-acidic mineral oil (e.g., "3 in 1") at least twice per year. The product may need to be adjusted and fixings tightened to ensure a satisfactory operation. This procedure is particularly essential if products are used within a 25-mile radius of coastal areas or close proximity to building sites or large industrial areas, where more frequent cleaning may be required to prevent the accumulation of corrosive contaminants.

Packaging

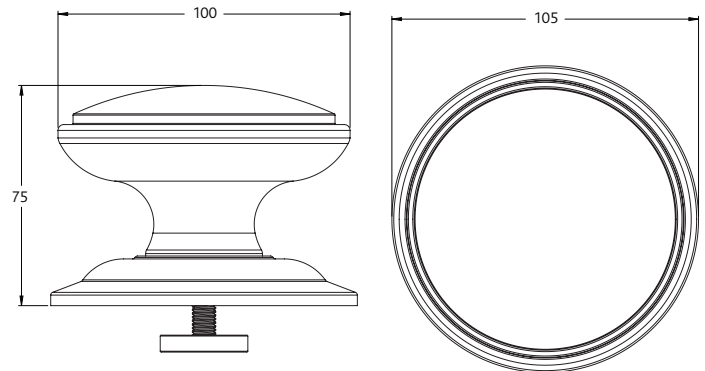
Door Knob

Individually boxed with fixings.
10 knobs in an outer box.

Door Knob - Through Fix



Door Knob - Concealed Fix



All dimensions are in mm and are nominal.
Fab&Fix reserves the right to change specification without notice.
It is the responsibility of the door manufacturer to ensure that the finished product meets any required safety and performance specification.