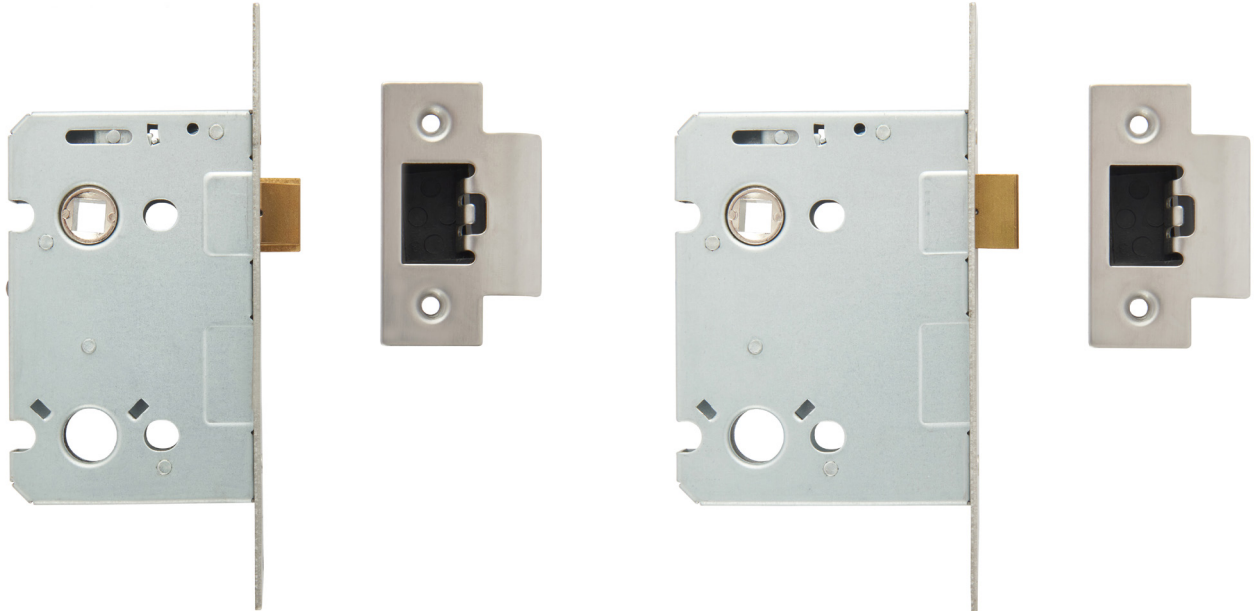
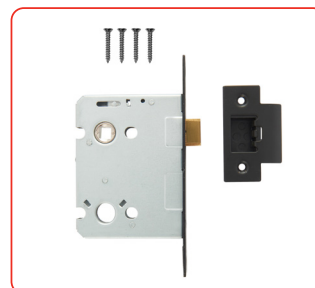


Valiant Upright Mortice Latch

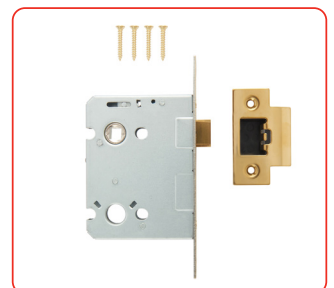


Features

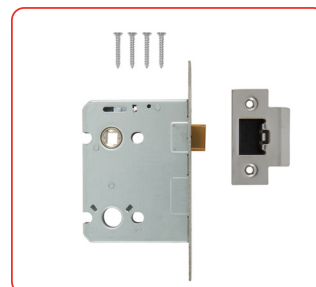
- Simple latch device for all internal door
- Features a latchbolt which is operated by a handle
- Easily reversible sashbolt
- Available in 64mm (2½") and 76mm (3") backsets
- Black, Polished Brass, Polished Stainless Steel and Satin Stainless Steel finishes available
- Square forend
- 57mm centre
- CE and UKCA marked. Suitable for use on fire or smoke resisting doorsets (30-minute and 60-minute timber based doorsets) when fitted with the compatible intumescent strip



Black



Polished Brass



Polished Stainless Steel



Satin Stainless Steel

Valiant Upright Mortice Latch

Ordering Details

Valiant Upright Mortice Latch 64mm

Finish	Part No. Boxed Version
Black 64mm (2½")	DSPCU64MB
Polished Stainless Steel 64mm (2½")	DSPCU64PS
Polished Brass 64mm (2½")	DSPCU64PB
Satin Stainless Steel 64mm (2½")	DSPCU64SS

Valiant Upright Mortice Latch 76mm

Finish	Part No. Boxed Version
Black 76mm (3")	DSPCU76MB
Polished Stainless Steel 76mm (3")	DSPCU76PS
Polished Brass 76mm (3")	DSPCU76PB
Satin Stainless Steel 76mm (3")	DSPCU76SS

Intumescent Kits

Product	Part No.
1mm (30 minute)	DANVAIK1
2mm (60 minute)	DANVAIK2

Suitable for use with the ERA Valiant range of Mortice Locks in a 30 minute (44mm thick) or 60 minute (54mm thick) single timber fire doorset.

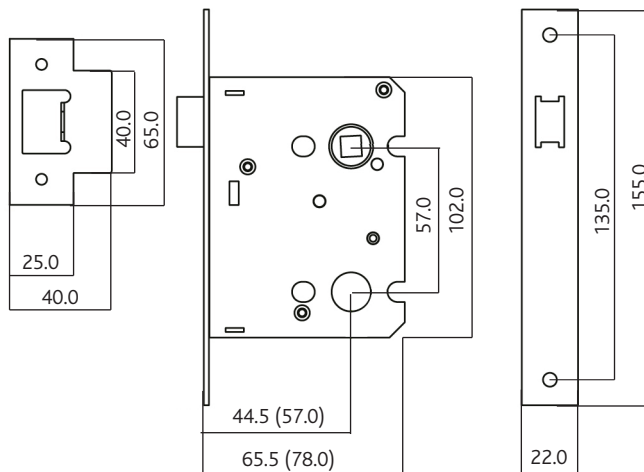
Packaging

Boxed version

1 lock per inner box, 10 locks per outer box.

Maintenance

Wipe the surface periodically with a soft cloth to remove excess grease or moisture.



All dimensions are in mm and are nominal. Numbers in brackets relate to 3" version of lock. Diagram illustrates product in locked position.

ERA reserves the right to change specification without notice

It is the responsibility of the door manufacturer to ensure that the finished product meets any required safety and performance specification.