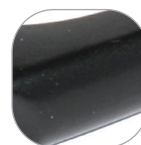


Decorative Urn Door Knocker



Features

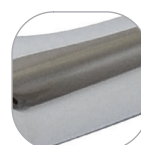
- Stylish door knocker
- Face fixing plate for ease of installation
- Available with or without aperture for a spyhole
- Available in a range of popular finishes
- Suitable for PVCu, composite and timber doors
- Part of the ERA Decorative furniture range



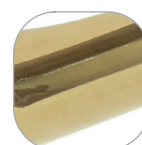
Black



White



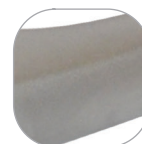
Polished
Chrome



Polished
Gold



Anthracite
Grey



Satin
Chrome

Decorative Urn Door Knocker

Ordering Details

Product	Part No.	
Decorative Urn Door Knocker		
Finish	No Spyhole	With Spyhole
White	DFNKNEDWH	DFNKNEDSPWH
Black	DFNKNEDBK	DFNKNEDSPBK
Polished Gold	DFNKNEDPG	DFNKNEDSPPG
Polished Chrome	DFNKNEDPC	DFNKNEDSPPC
Satin Chrome	DFNKNEDSC	DFNKNEDSPSC
Anthracite Grey	DFNKNEDAG	DFNKNEDSPAG

For additional part numbers please contact our sales office.

Technical Information

Corrosion resistance

Meets the requirements of BS EN 1670 Grade 4 (240 hours)

Material Specification

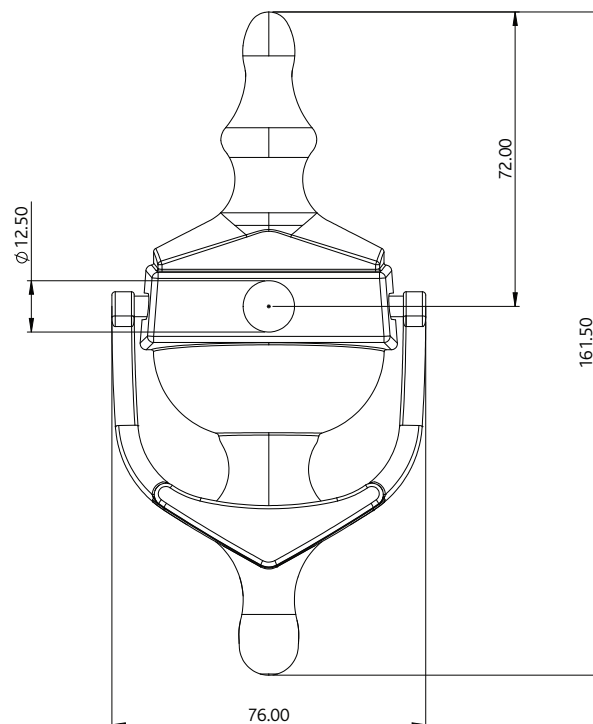
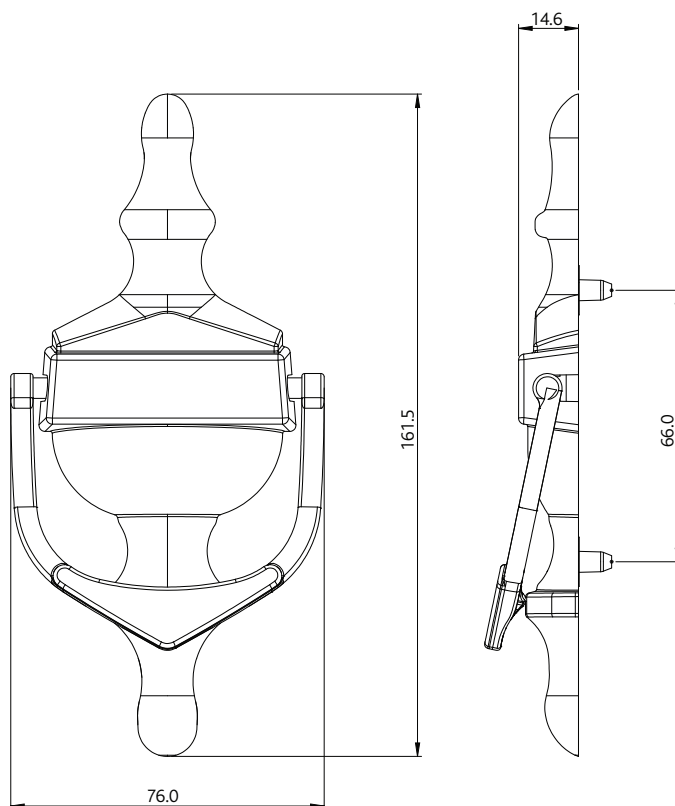
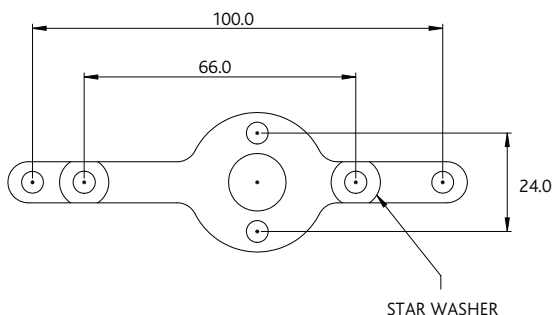
Knocker:	High quality Zinc
Coatings:	White, Black and Anthracite Grey powder painted coated. Polished Gold, Chrome and Satin Chrome Plate electroplated

Maintenance

For continued protection of the quality finish and appearance, we advise routine cleaning of all our external hardware. We recommend wiping it with a clean cloth soaked in warm water and mild detergent every month. Please refrain from using heavy-duty cleaners, containing Chlorine or Potassium. Moving parts should also be lightly lubricated using a light non-acidic mineral oil (e.g., "3 in 1") at least twice per year. The product may need to be adjusted and fixings tightened to ensure a satisfactory operation. This procedure is particularly essential if products are used within a 25-mile radius of coastal areas or close proximity to building sites or large industrial areas, where more frequent cleaning may be required to prevent the accumulation of corrosive contaminants.

Packaging

Knocker
Individually bagged with fixings.
20 knockers in an outer box.



All dimensions are in mm and are nominal.
ERA reserves the right to change specification without notice. It is the responsibility of the door manufacturer to ensure that the finished product meets any required safety and performance specification.