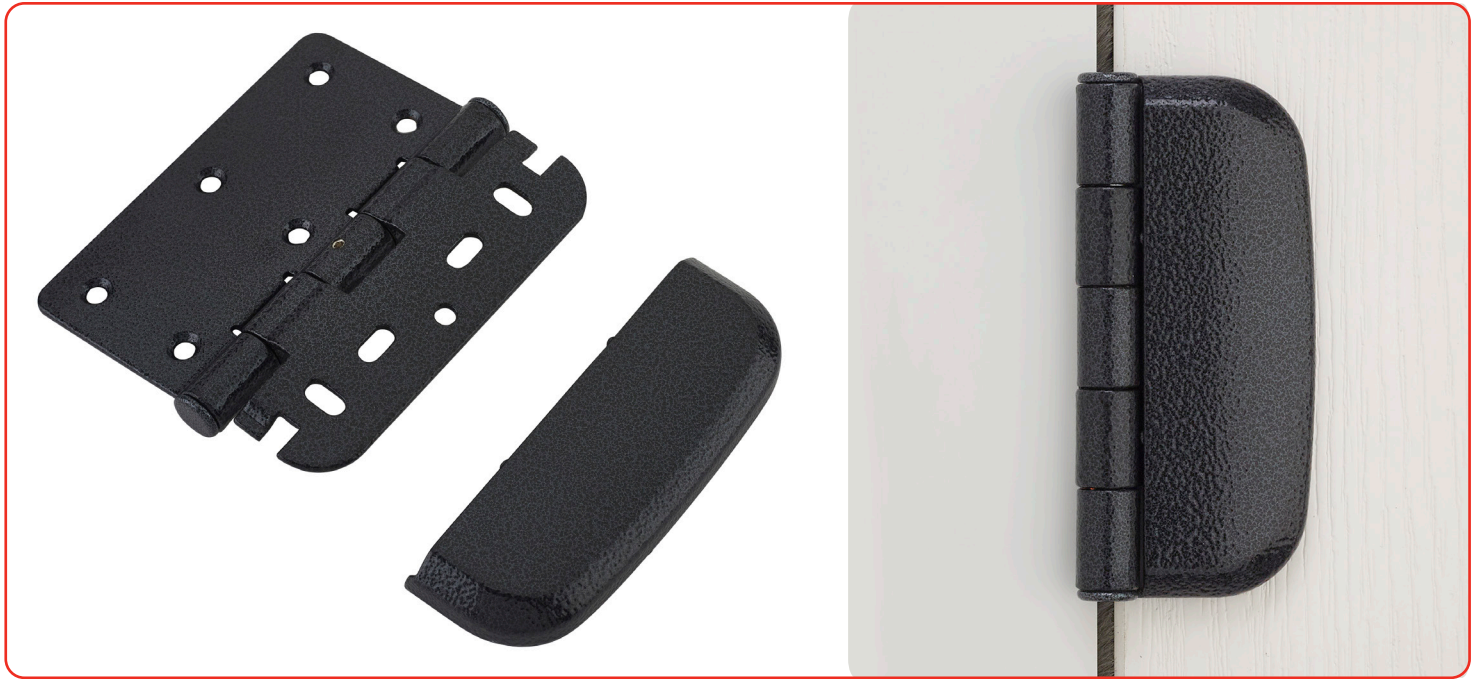


Composite Door Hinge

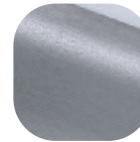


Features

- Soft contoured knuckle hinge**
 Designed to blend into the door aesthetic
- Suitable for composite and timber doors applications**
 Quick and easy to fit for inward opening doors
- Door face fixing**
 With frame fixings to suite timber or PVCu frames
- Complete hinge mechanism**
 With perfectly matching clip on hinge covers
- Robust construction**
 Tested to over 100,000 cycles at 80kg to BS EN 1935
- High security applications**
 Designed to meet the requirements of PAS 24:2012 as part of a compliant door system, and BS 6375-2:2009
- Standard and slimline hinge body options**
 Hinge and covers boxed separately with optional line side bulk packaging, to reduce waste for sustainability
- On site adjustment**
 Fitting adjustment via slotted screws on hinge body



Hardex Chrome



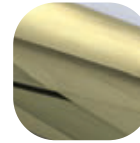
Hardex Graphite



White



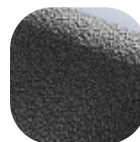
Hardex Bronze



Hardex Gold



Black



Antique Black

Composite Door Hinge

Ordering Details

Composite Door Hinge

Product	Part No.	
Finish	Standard Body	Slim Body
White	DHISDWHHO	DHISLWHHO
Black	DHISDBKHO	DHISLBKHO
Hardex Chrome	DHISDHCHO	DHISLHCHO
Hardex Bronze	DHISDBHBO	DHISLBHBO
Hardex Gold	DHISDHGHO	DHISLHGHO
Hardex Graphite	DHISDGRHO	DHISLGRHO
Antique Black	DHISDABHO	DHISLABHO
Finish	Hinge Cover	
White	DHICDWHCP	
Black	DHICDBKCP	
Hardex Chrome	DHICDHCCP	
Hardex Bronze	DHICDHBCP	
Hardex Gold	DHICDHGCP	
Hardex Graphite	DHICDGRCP	
Antique Black	DHICDABCP	

Technical Information

Corrosion resistance

All finishes salt spray tested to 480 hours (BS EN 1670: Class 5)

Operation

Endurance tested in excess of 100,000 cycles, BS 6375 Part 2

Adjustment

Up to 5mm vertical and horizontal door position adjustment provided by slotted screw apertures on fixing plate

Performance

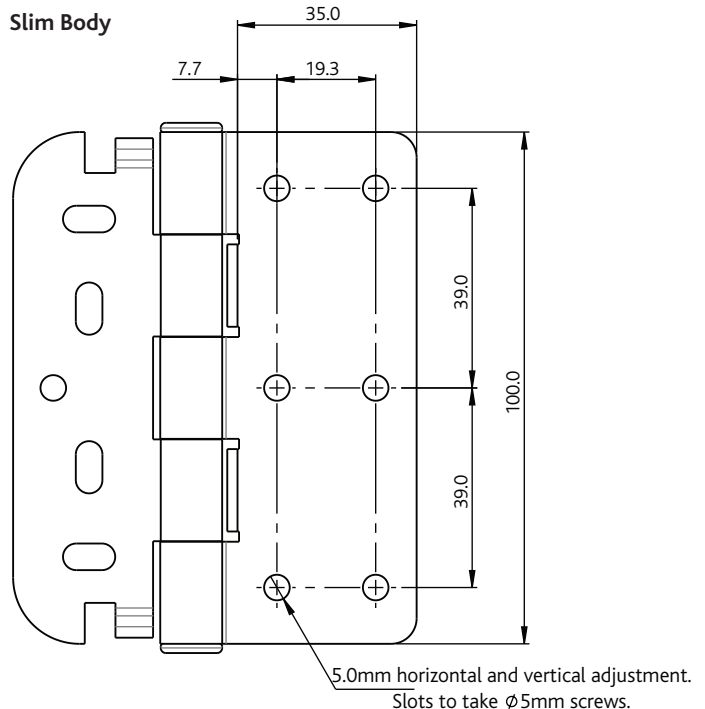
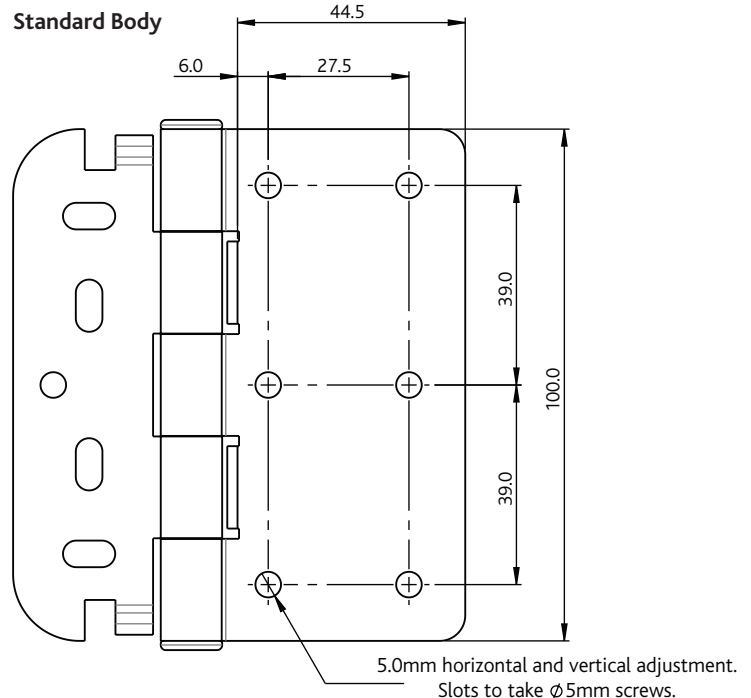
Tested to BS 6375-2:2009 Class 5 (medium) and BS EN 1935:2002 with 3 hinges up to 80kg per sash. Applied load on hinge 5KN. Designed to meet the requirements of PAS 24 in a compliant door set.

Material Specification

Hinge Body and Flag:	Steel
Hinge Cover:	Zinc
Coatings:	Hardex Chrome, Hardex Bronze, Hardex Gold, Hardex Graphite, Antique Black, Black and White

Maintenance

For continued protection of the quality finish and appearance, we advise routine cleaning of all our external hardware. We recommend wiping it with a clean cloth soaked in warm water and mild detergent every month. Please refrain from using heavy-duty cleaners, containing Chlorine or Potassium. Moving parts should also be lightly lubricated using a light non-acidic mineral oil (e.g., "3 in 1") at least twice per year. The product may need to be adjusted and fixings tightened to ensure a satisfactory operation. This procedure is particularly essential if products are used within a 25-mile radius of coastal areas or close proximity to building sites or large industrial areas, where more frequent cleaning may be required to prevent the accumulation of corrosive contaminants.



All dimensions are in mm and are nominal. Fab&Fix reserves the right to change specification without notice. It is the responsibility of the door manufacturer to ensure that the finished product meets any required safety and performance specification.

Packaging

Hinge
48 hinges per inner box.