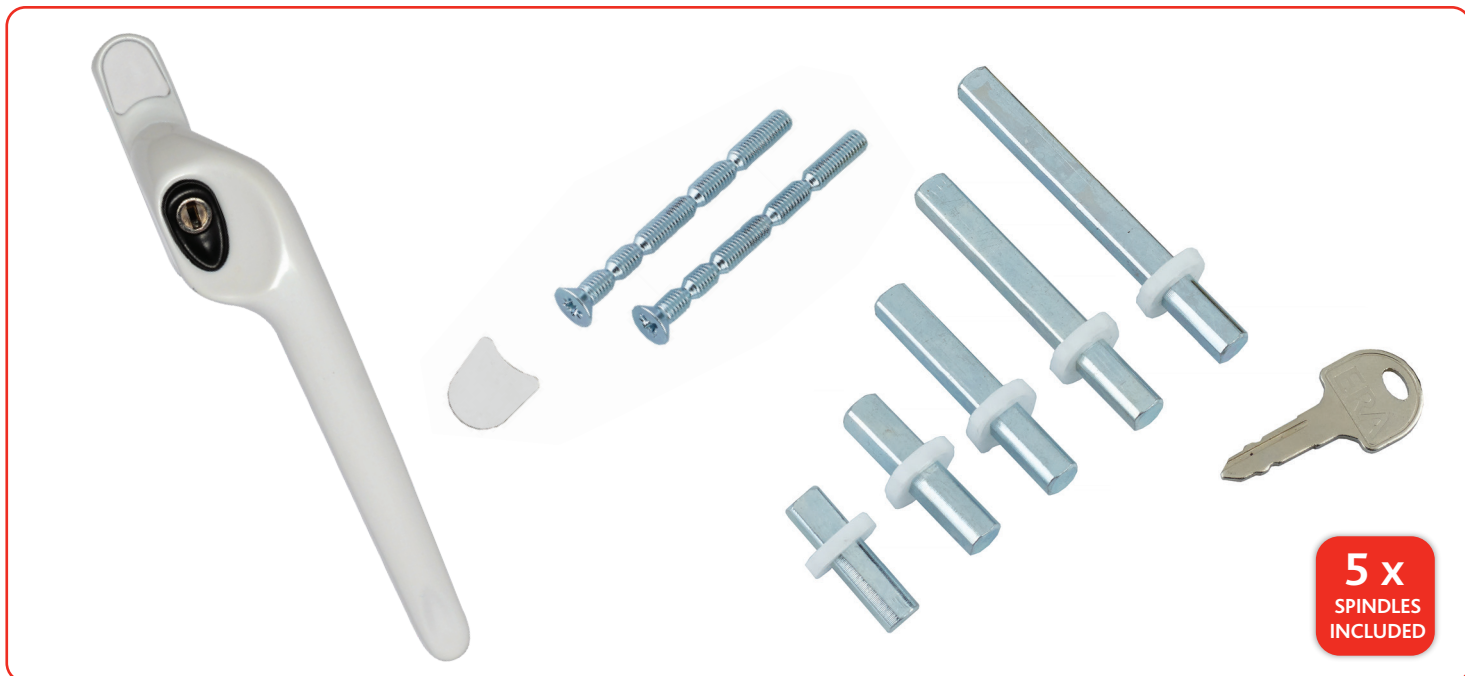


Universal Maxim Offset Window Handle



Features

- Modern stylish universal espagnolette handle
- 5 spindle lengths supplied to suit most casement window: 9mm, 15mm, 30mm, 43mm and 55mm
- Firm ergonomic design grip
- Distinctive 'teardrop' feature and recessed button
- Large button for ease of operation
- Locks automatically on closing - deadlocked for enhanced security
- Key locking handle
- Optional inserts to convert locking handles to non-locking
- Offset left and right handed designs
- Available in White (black and white button), Polished Gold and Polished Chrome



Universal Maxim Offset Window Handle

Ordering Details

Universal Maxim Offset

Finish	Retail Boxed Version	
	Left Hand	Right Hand
White (black button)	WHAUMWHLHBBDB	WHAUMWHRHBBDB
White (white button)	WHAUMWHLHWBDB	WHAUMWHRHWBDB
Polished Gold	WHAUMGOLHBBDB	WHAUMGORHBBDB
Polished Chrome	WHAUMCHLHBBDB	WHAUMCHRHBBDB

Included Spindle Options ('A') 9mm, 15mm, 30mm, 43mm and 55mm.

Accessories

Description	Part No.
Key	WAKENK5877
Screw Cover (White)	WACCWH6021
Screw Cover (Gold)	WACCPG6030
Screw Cover (Silver)	WACCSA6030

Technical Information

Corrosion resistance
Meets the requirements of BS EN 1670:2007 Grade 3 (96 hours)

Performance
Endurance tested in excess of 50,000 cycles

Material Specification

Handle Grip & Back Plate:	Zinc Alloy Castings to BS EN 12844:1999 Aluminium Alloy to BS EN 1676:1997
Coatings:	White Powder Paint Polished Gold and Chrome electroplated to BS EN12540:2000
Cylinder:	Zinc Alloy Casting and Nickel Plate
Button:	Acetal (POM) Black or White
Screw Cover:	Push to fit White elastomer Self adhesive Gold or Silver anodised aluminium

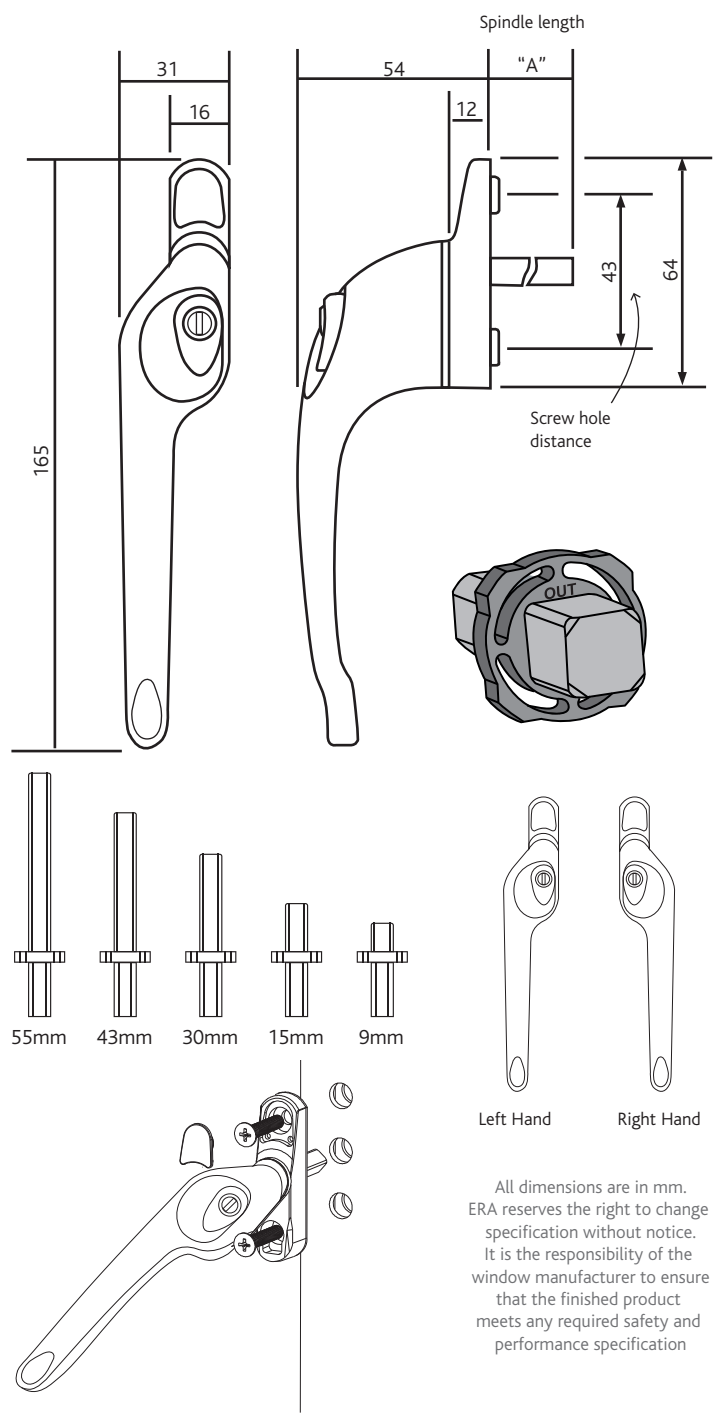
Packaging

Individual cardboard packaging with euro hooks. Includes: window handle key, 5 x spindle lengths (9mm, 15mm, 30mm, 43mm and 55mm), screws and screw cover caps. 1 per retail box, 10 retail boxes per outer box. 0.22Kg per item, 2.2Kg per outer box.

Caution

This handle is supplied with a selection of spindle sizes to allow you to choose the most suitable size to replace a current handle. Check that the dimension between the screw holes mirrors the current handle to ensure a correct fit. Measure the length of the spindle on the current handle to ensure you select the correct size from the bag. Once you have the correct size, look for the word **OUT** stamped on the plug, this needs to be facing you when inserting into the handle centre square hole.

NOTE: Around 20mm of the spindle, including the plastic insert plug, will be concealed once inserted into the back of the handle. It is important you include this in your measurement.



All dimensions are in mm. ERA reserves the right to change specification without notice. It is the responsibility of the window manufacturer to ensure that the finished product meets any required safety and performance specification

Maintenance

For continued protection of the quality finish and appearance, we advise routine cleaning of all our external hardware. We recommend wiping it with a clean cloth soaked in warm water and mild detergent every month. Please refrain from using heavy-duty cleaners, containing Chlorine or Potassium. Moving parts should also be lightly lubricated using a light non-acidic mineral oil (e.g., "3 in 1") at least twice per year. The product may need to be adjusted and fixings tightened to ensure a satisfactory operation. This procedure is particularly essential if products are used within a 25-mile radius of coastal areas or close proximity to building sites or large industrial areas, where more frequent cleaning may be required to prevent the accumulation of corrosive contaminants.