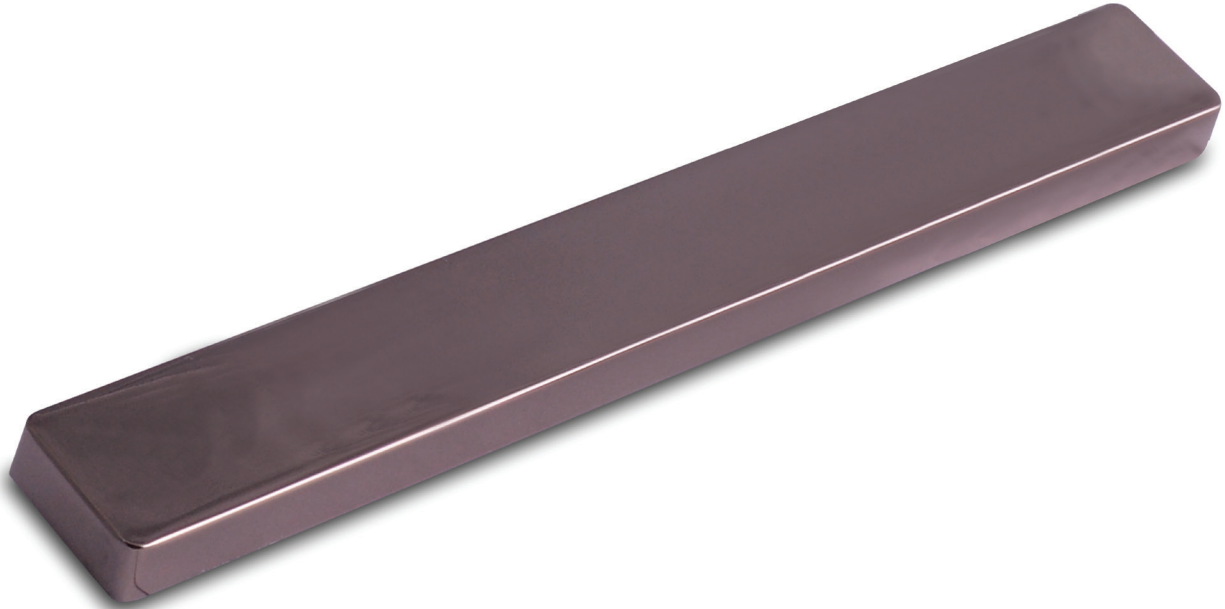


### Architectural Exterior Blank Plate

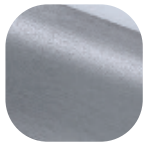


### Features

- **Solid die cast construction**  
Sturdy feel
- **Flexible purpose component**  
Enables all aspects of a job to be completed as a perfectly matching set
- **Baseplate common with all Architectural handles**  
Same routing detail regardless of product variant chosen



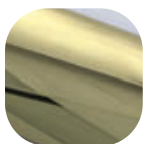
Hardex  
Chrome



Hardex  
Graphite



Hardex  
Bronze



Hardex  
Gold

### Architectural Exterior Blank Plate

#### Ordering Details

##### Product

**Architectural Exterior Blank Plate**

##### Finish

Finish	Part No.
Hardex Chrome	1W250
Hardex Bronze	1W251
Hardex Gold	1W252
Hardex Graphite	1W253

#### Technical Information

##### Corrosion resistance

Meets the requirements of BS EN 1670 Grade 5 (480 hours)

##### Material Specification

Backplate: High quality Zinc for all Hardex finishes

Coatings: Hardex Chrome, Hardex Bronze, Hardex Gold and Hardex Graphite

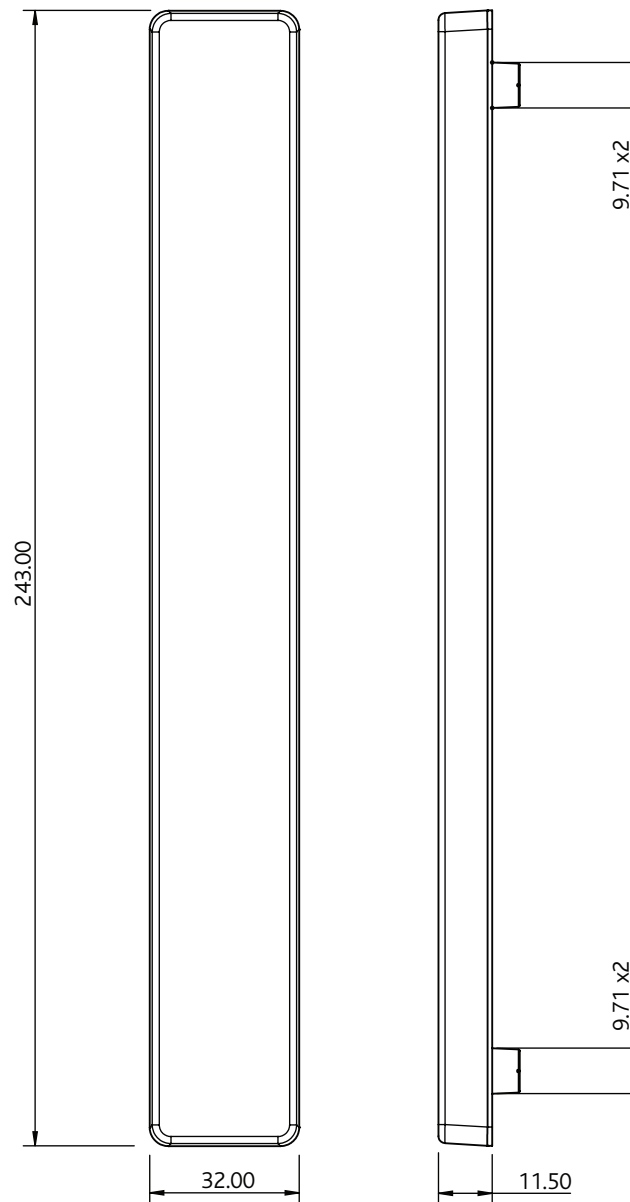
#### Maintenance

For continued protection of the quality finish and appearance, we advise routine cleaning of all our external hardware. We recommend wiping it with a clean cloth soaked in warm water and mild detergent every month. Please refrain from using heavy-duty cleaners, containing Chlorine or Potassium. Moving parts should also be lightly lubricated using a light non-acidic mineral oil (e.g., "3 in 1") at least twice per year. The product may need to be adjusted and fixings tightened to ensure a satisfactory operation. This procedure is particularly essential if products are used within a 25-mile radius of coastal areas or close proximity to building sites or large industrial areas, where more frequent cleaning may be required to prevent the accumulation of corrosive contaminants.

#### Packaging

##### Handles

Individually bagged.  
8 handles in an outer box.



All dimensions are in mm and are nominal.  
Fab&Fix reserves the right to change specification without notice.  
It is the responsibility of the door manufacturer to ensure that the finished product meets any required safety and performance specification.