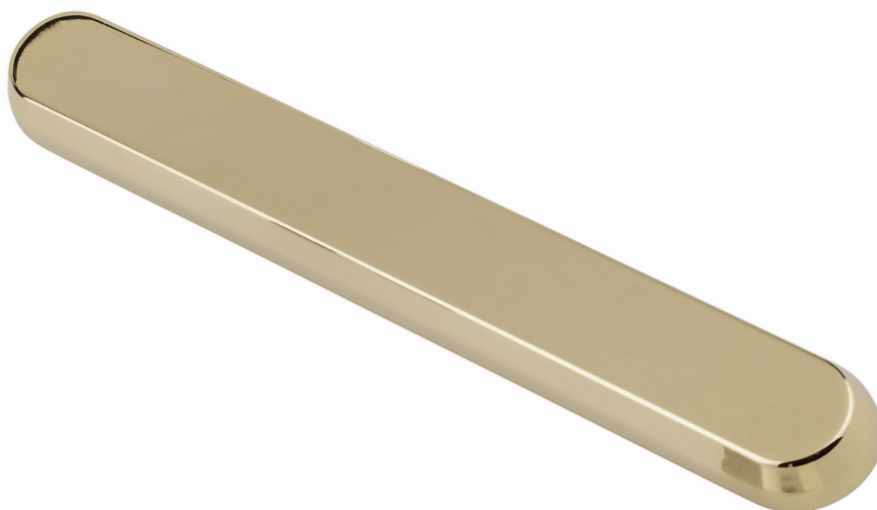


Pembroke Exterior Blank Plate

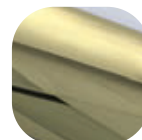


Features

- **Solid die cast Zinc construction**
Sturdy feel
- **Flexible purpose component**
Enables all aspects of a job to be completed as a perfectly matching set
- **Baseplate common with all Pembroke handles**
Enables all aspects of a job to be completed as a perfectly matching set



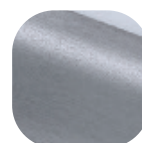
Hardex
Chrome



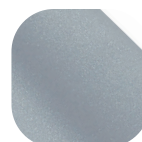
Hardex
Gold



Black



Hardex
Graphite



Premium
Satin



White

Pembroke Exterior Blank Plate

Ordering Details

Product

Pembroke Exterior Blank Plate

Finish

Part No.

Hardex Chrome	8B099
Hardex Gold	8B100
Hardex Graphite	8B101
White	8B097
Black	8B098
Premium Satin	DHAPEPSBP

Technical Information

Corrosion resistance

Meets the requirements of BS EN 1670:2007 Grade 5 (480 hours)

Material Specification

Backplate: High quality Zinc for all finishes

Coatings: Hardex Chrome, Hardex Gold, Hardex Graphite, Premium Satin, White and Black.

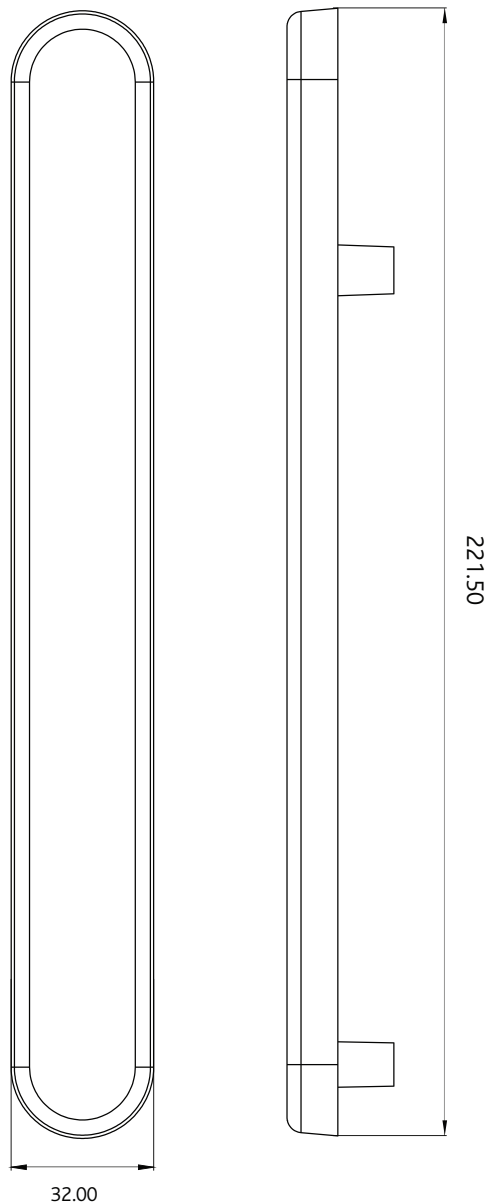
Maintenance

For continued protection of the quality finish and appearance, we advise routine cleaning of all our external hardware. We recommend wiping it with a clean cloth soaked in warm water and mild detergent every month. Please refrain from using heavy-duty cleaners, containing Chlorine or Potassium. Moving parts should also be lightly lubricated using a light non-acidic mineral oil (e.g., "3 in 1") at least twice per year. The product may need to be adjusted and fixings tightened to ensure a satisfactory operation. This procedure is particularly essential if products are used within a 25-mile radius of coastal areas or close proximity to building sites or large industrial areas, where more frequent cleaning may be required to prevent the accumulation of corrosive contaminants.

Packaging

Handles

Individually bagged.



All dimensions are in mm and are nominal.
Fab&Fix reserves the right to change specification without notice.
It is the responsibility of the door manufacturer to ensure that the finished product meets any required safety and performance specification.