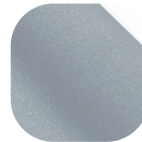


### Flat Fitch Catch and Keep



#### Features

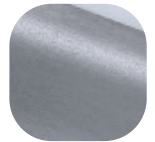
- Sturdy feel**  
Solid die cast zinc construction
- Elegant styling**  
Soft, curved ergonomic design
- Perfectly Matching**  
Suited Architectural Bottom Sash Knob for a perfectly matching window
- Down to the finest details**  
Supplied with colour coordinated screws that perfectly matches to the Flat Fitch Catch
- Secure the sash**  
Allen key locking
- Designed for PVCu, Timber and Aluminium sliding windows**  
To suit all window materials, we have a range of different keeps to suit specific profiles
- Available in the complete range of Hardex finishes**  
Perfectly matching to the full Fab&Fix range of products



Premium Satin



Hardex Chrome



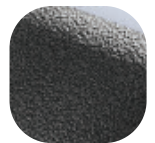
Hardex Graphite



Hardex Bronze



Hardex Gold



Antique Black



Hardex Pewter

### Flat Fitch Catch and Keep

#### Ordering Details

##### Product

##### Flat Fitch Catch and Keep

Finish	Part No.
Hardex Chrome	VHCLFHC01A
Hardex Bronze	VHCLFHB01A
Hardex Gold	VHCLFHG01A
Hardex Graphite	VHCLFGR01A
Hardex Pewter	VHCLFPT01A
Antique Black	VHCLFAB01A
Premium Satin	VHCLFPS01A

#### Technical Information

##### Corrosion Resistance

Meets the requirements of BS EN 1670:2007 Grade 5 (480 hours)

##### Material Specification

Flat Fitch Catch: Zinc Die Cast

Coatings: Hardex Chrome, Hardex Bronze, Hardex Gold, Antique Black, Hardex Graphite, Premium Satin, White and Black.

#### Maintenance

For continued protection of the quality finish and appearance, we advise routine cleaning of all our external hardware. We recommend wiping it with a clean cloth soaked in warm water and mild detergent every month. Please refrain from using heavy-duty cleaners, containing Chlorine or Potassium. Moving parts should also be lightly lubricated using a light non-acidic mineral oil (e.g., "3 in 1") at least twice per year. The product may need to be adjusted and fixings tightened to ensure a satisfactory operation. This procedure is particularly essential if products are used within a 25-mile radius of coastal areas or close proximity to building sites or large industrial areas, where more frequent cleaning may be required to prevent the accumulation of corrosive contaminants.

#### Packaging

**Flat Fitch Catch and Keep:** Individually bagged, 100 per box

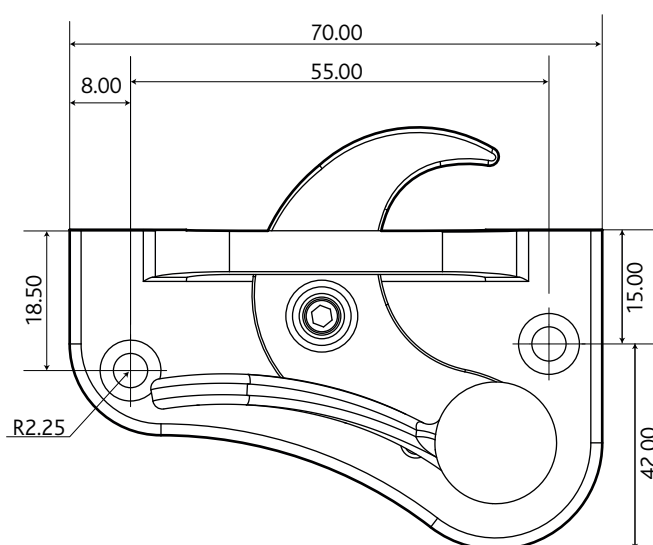
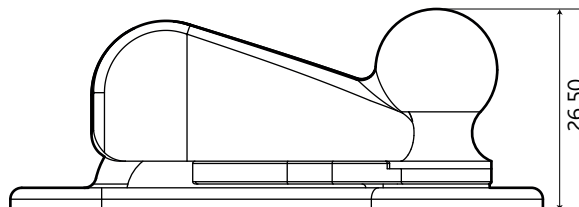


Diagram not to scale.

All dimensions are in mm and are nominal.

Fab&Fix reserves the right to change specification without notice. It is the responsibility of the window manufacturer to ensure that the finished product meets any required safety and performance specification.