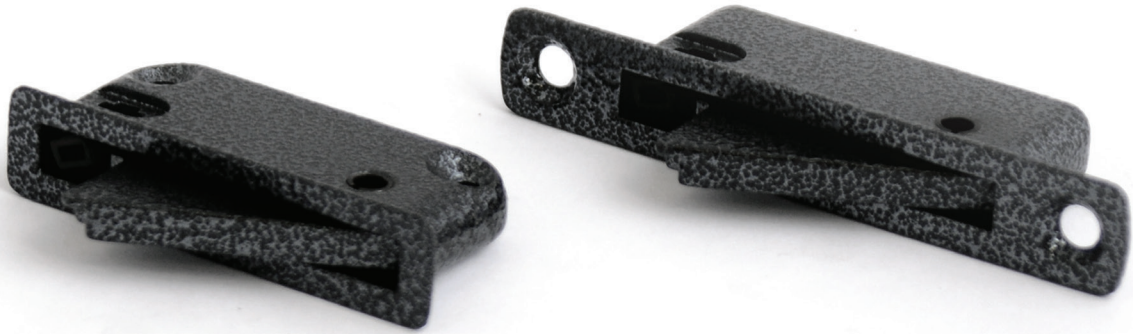
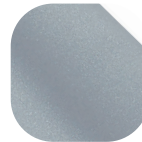


Sash Travel Restrictors



Features

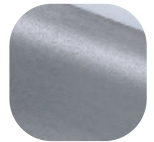
- Convenient**
Simple and cost effective method to restrict the opening on sliding sash windows
- Designed with safety in mind**
The robust restrictor positioned on the sash limits the opening of the window. Prevents the travel of the sash beyond a designated position.
- Enhanced security**
With a key lockable spring loaded bolt, simply closing the bolt will allow the sash to move freely
- Ease of application**
Non-handed for ease of application and stocking. It is recommended that a restrictor is fitted to both sides of the sash
- Discreetly sits on window**
Routed into the sash discreetly to appear as part of the window, with both side and face fix versions available for maximum choice
- Perfectly Matching**
Available in the complete range of Hardex finishes that perfectly matches to the hardware range for sliding windows, casement windows and doors
- Designed for PVCu, Timber and Aluminium sliding windows**
To suit all window materials



Premium Satin



Hardex Chrome



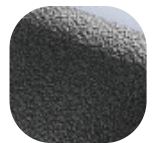
Hardex Graphite



Hardex Bronze



Hardex Gold



Antique Black



White

Sash Travel Restrictors

Ordering Details

Product

Sash Travel Restrictor

Finish	Side Fix	Face Fix
Hardex Chrome	BF-STP-SF-HC	BF-STP-FF-HC
Hardex Bronze	BF-STP-SF-HB	BF-STP-FF-HB
Hardex Gold	BF-STP-SF-HG	BF-STP-FF-HG
Hardex Graphite	BF-STP-SF-GR	BF-STP-FF-GR
Premium Satin	BF-STP-SF-PS	BF-STP-FF-PS
Antique Black	BF-STP-SF-AB	BF-STP-FF-AB
White	BF-STP-WHI03	BF-STP-WHI07

Technical Information

Corrosion Resistance

Meets the requirements of BS EN 1670:2007 Grade 5 (480 hours)

Performance

Meets the requirements of BS EN 14351-1 clause 4.8

Material Specification

Lock body:	Zinc Die Cast, Stainless Steel
Bolt:	Steel
Coatings:	Hardex Chrome, Hardex Bronze, Hardex Gold, Antique Black, Hardex Graphite, Premium Satin and White.
Bolt stop:	Nylon
Key:	Aluminium
Recommended screws:	4mm x 20/25mm twin thread countersunk pozi No2 point screws

Maintenance

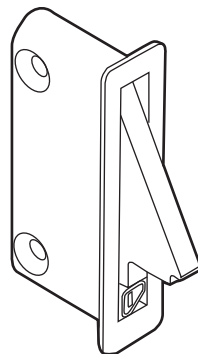
For continued protection of the quality finish and appearance, we advise routine cleaning of all our external hardware. We recommend wiping it with a clean cloth soaked in warm water and mild detergent every month. Please refrain from using heavy-duty cleaners, containing Chlorine or Potassium. Moving parts should also be lightly lubricated using a light non-acidic mineral oil (e.g., "3 in 1") at least twice per year. The product may need to be adjusted and fixings tightened to ensure a satisfactory operation. This procedure is particularly essential if products are used within a 25-mile radius of coastal areas or close proximity to building sites or large industrial areas, where more frequent cleaning may be required to prevent the accumulation of corrosive contaminants.

Packaging

Sash Travel Restrictors

Individually bagged, 200 per box

Side fix



Face fix

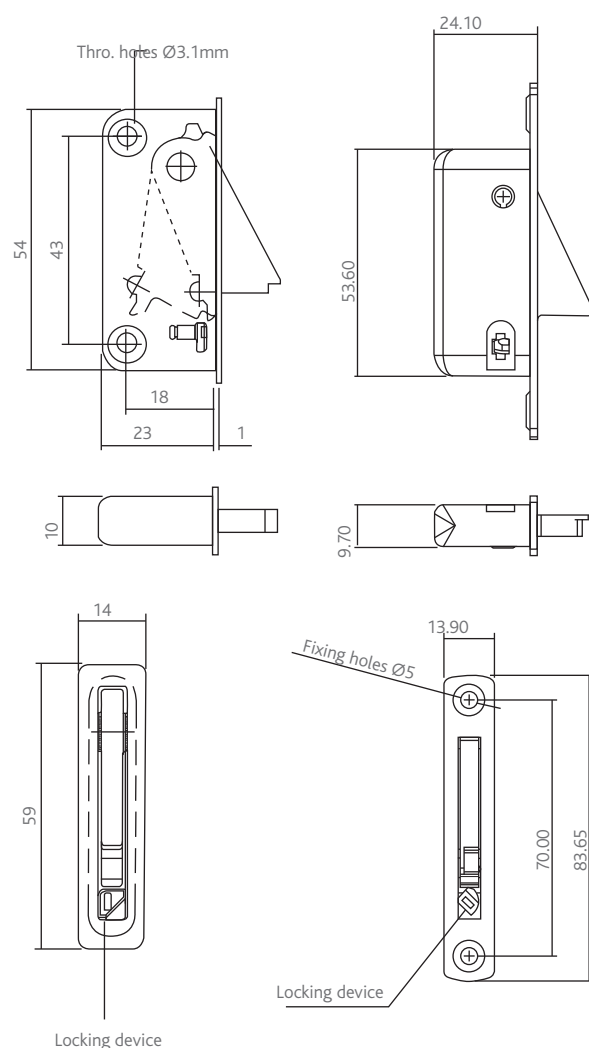
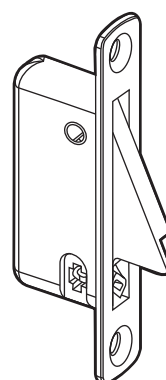


Diagram not to scale
All dimensions are in mm and are nominal.
ERA reserves the right to change specification without notice