

### Kensington Slam Shut



### Features

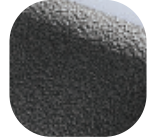
- **External D ring handle and internal lever**  
Suitable for slam shut operation
- **Solid die cast zinc construction with heavy duty spring cassette**  
Sturdy feel and consistent 90 degree internal lever return
- **Non-handed design**  
D ring handle and lever can be easily reversed
- **Sculpted ergonomic D ring and lever with low friction nylon bush**  
Easy to grip, inside and out, with smooth action
- **Lever design matches the Kensington handle**  
Create a perfectly matching set with the Kensington entrance door handle
- **Colour coordinated screw heads**  
Perfectly matching hardware, even down to the smallest details
- **Wide backplate**  
To suit cylinder guards and accommodate larger cylinder preparation
- **Supplied with care instructions**  
Helps the homeowner to keep the hardware in optimal condition
- **Each part packaged in a separate chamber, but supplied as a set**  
No scratching of parts during transit



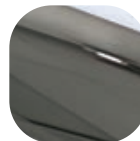
Hardex Chrome



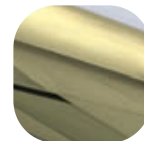
Hardex Satin



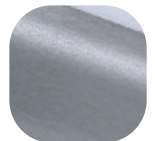
Antique Black



Hardex Bronze



Hardex Gold



Hardex Graphite

### Kensington Slam Shut

#### Ordering Details

##### Product

**Kensington Slam Shut**

Finish	Part No.
Hardex Chrome	1L001
Hardex Satin	1L002
Hardex Bronze	1L003
Hardex Gold	1L005
Hardex Graphite	1L008
Antique Black	1L006
White	1L000

#### Technical Information

##### Corrosion resistance

Meets the requirements of BS EN 1670:2007 Grade 5 (480 hours)

##### Operation

Endurance tested in excess of 200,000 cycles

#### Material Specification

Handle Grip and Backplate:	High quality Zinc for all finishes and Antique Black
Coatings:	Hardex Chrome, Hardex Satin, Hardex Bronze, Hardex Gold, Hardex Graphite, Antique Black and White
Spindle / Screws:	Requires an additional screw and spindle pack with M6 machine screws and 8mm spindle
Cylinder:	Euro Cylinder, 92mm PZ

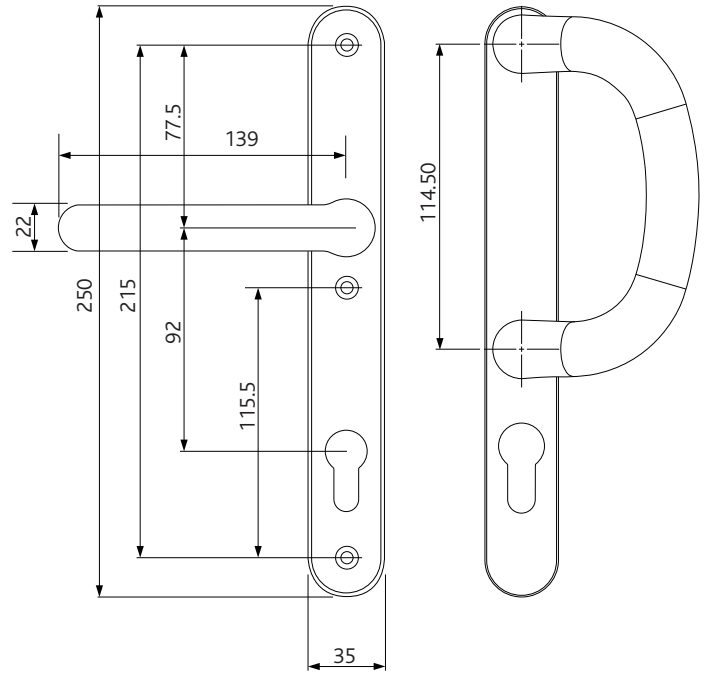
#### Maintenance

For continued protection of the quality finish and appearance, Fab&Fix advise routine cleaning of all our external hardware. Moving parts should also be lightly lubricated at least twice a year. This procedure is particularly essential if products are used within a 25-mile radius of coastal areas or close proximity to building sites or large industrial areas, where more frequent cleaning may be required to prevent the accumulation of corrosive contaminants.

#### Packaging

##### Handles

Individually bagged with care instructions.  
8 handles in an outer box.



All dimensions are in mm and are nominal.  
Fab&Fix reserves the right to change specification without notice.  
It is the responsibility of the door manufacturer to ensure that the finished product meets any required safety and performance specification.