

### Architectural Door Knocker



#### Features

- **Modern contemporary designed knocker**  
Part of the Architectural Door hardware range
- **Patented face fixed plate works with all major door materials**  
Easy installation; no need to use fixing bolts or to drill through the door
- **Solid substantial design**  
Tangible upgrade to the Classic series of knockers and decorative hardware
- **Available in the Architectural Hardex finish range**  
Finishes to suit contemporary door designs



Hardex  
Chrome



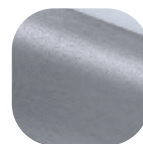
Hardex  
Gold



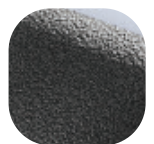
Black



Hardex  
Bronze



Hardex  
Graphite



Antique  
Black

## Architectural Door Knocker

### Ordering Details

#### Product

#### Architectural Door Knocker

Finish	Part No.
Hardex Chrome	4A650
Hardex Bronze	4A651
Hardex Gold	4A652
Hardex Graphite	4A653
Antique Black	4A654
Black	4A655

### Technical Information

#### Corrosion resistance

Meets the requirements of BS EN 1670 Grade 5 (480 hours)

#### Material Specification

Knocker:	High quality Zinc
Coatings:	Hardex Chrome, Hardex Bronze, Hardex Gold, Hardex Graphite, Antique Black and Black.

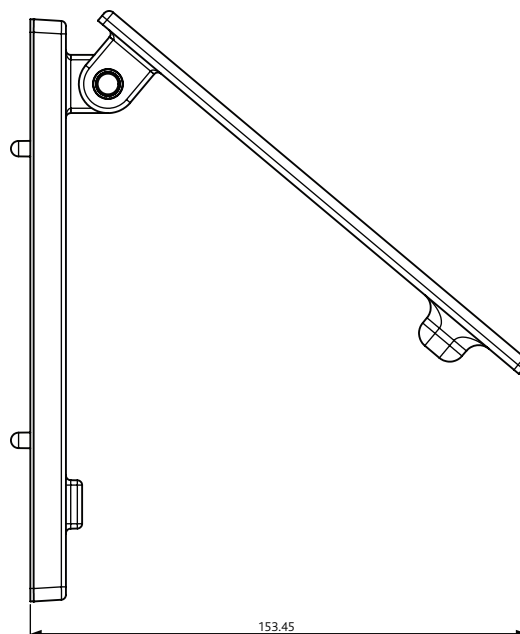
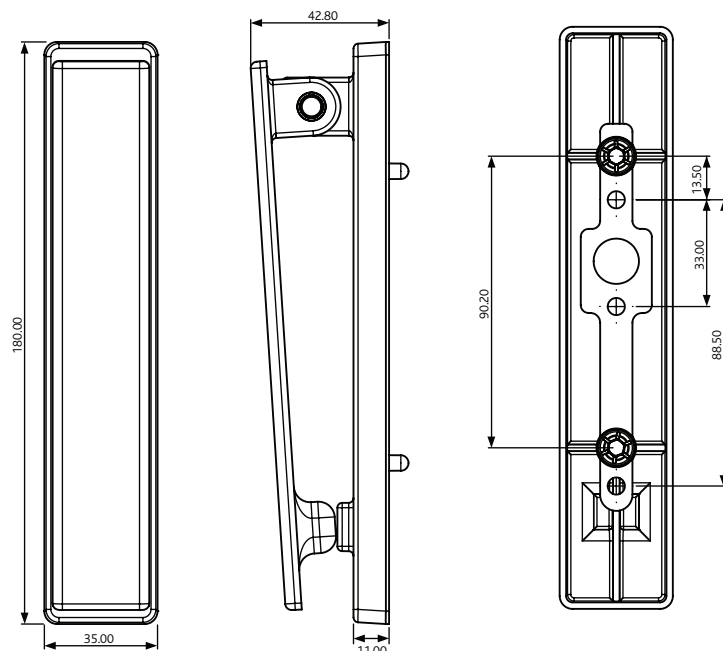
### Maintenance

For continued protection of the quality finish and appearance, we advise routine cleaning of all our external hardware. We recommend wiping it with a clean cloth soaked in warm water and mild detergent every month. Please refrain from using heavy-duty cleaners, containing Chlorine or Potassium. Moving parts should also be lightly lubricated using a light non-acidic mineral oil (e.g., "3 in 1") at least twice per year. The product may need to be adjusted and fixings tightened to ensure a satisfactory operation. This procedure is particularly essential if products are used within a 25-mile radius of coastal areas or close proximity to building sites or large industrial areas, where more frequent cleaning may be required to prevent the accumulation of corrosive contaminants.

### Packaging

#### Architectural Door Knocker

Individually boxed with fixing bracket and care instructions.  
20 knockers in an outer box.



All dimensions are in mm and are nominal.  
Fab&Fix reserves the right to change specification without notice.  
It is the responsibility of the door manufacturer to ensure that the finished product meets any required safety and performance specification.