

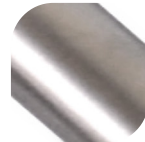
### 316 Stainless Steel Flat Bar Handles



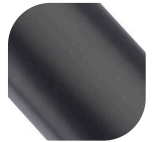
#### Features

- **Sleek and elegant Flat Bar Handle design**  
Unique design that co-ordinate with the most up to date door styles
- **Brushed stainless steel bar handles**  
Contemporary handles that create a stunning door entrance and feels very smooth and even to the touch
- **Fixing kits to suit Timber, Composite, Aluminium and PVCu**  
Single fixing as standard. Back to back, secret fixing and PVCu fixings available
- **Matching escutcheon to suit Euro Profile cylinders**  
Compatible with all Euro Profile cylinders and key wind up locks
- **Perfectly finished corners and precision joints**  
Meticulously produced quality product

Available finishes:



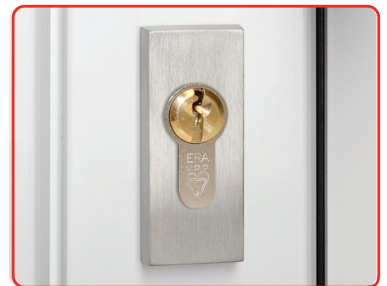
Stainless Steel



Matte Black



Flat Inline Handle



Escutcheon



Single fix



Back to back fix

## 316 Stainless Steel Flat Bar Handles

### Ordering Details

Size	No. of Fixings	Dimension A	Part No.
<b>Flat Bar Inline Handle - Stainless Steel</b>			
400mm	2	200	DHBHFL400-316SI
600mm	2	400	DHBHFL600-316SI
800mm	2	600	DHBHFL800-316SI
1000mm	2	800	DHBHFL1000-316SI
1200mm	2	1000	DHBHFL1200-316SI
1400mm	3	1200	DHBHFL1400-316SI
1600mm	3	1400	DHBHFL1600-316SI
1800mm	3	1600	DHBHFL1800-316SI

Single Fix (SI) as standard. Other fixing packs available (see table below)

### Flat Bar Inline Handle - Matte Black

400mm	2	200	DHBHFL400-316MBSI
600mm	2	400	DHBHFL600-316MBSI
800mm	2	600	DHBHFL800-316MBSI
1000mm	2	800	DHBHFL1000-316MBSI
1200mm	2	1000	DHBHFL1200-316MBSI
1400mm	3	1200	DHBHFL1400-316MBSI
1600mm	3	1400	DHBHFL1600-316MBSI
1800mm	3	1600	DHBHFL1800-316MBSI

Single Fix (SI) as standard. Other fixing packs available (see table below)

### Accessories - Stainless Steel

Centre Knob	DFKBSS75-316
Oval Escutcheon	BHESC-OVAL
Square Escutcheon	BHESC-SQUARE

### Accessories - Matte Black

Oval Escutcheon	BHESC-OVAL-MB
Square Escutcheon	BHESC-SQUARE-MB

### Fixing Kits

Secret Fixing Screw	9F082
2 Pillar Single Fix (SI)	DAFK2PSI
3 Pillar Single Fix (SI)	DAFK3PSI
2 Pillar Back to Back (BB)	DAFK2PBB
3 Pillar Back to Back (BB)	DAFK3PBB
Threaded Bar 120mm	DATB120
Maintenance Kit	9B045

### Technical Information

#### Performance

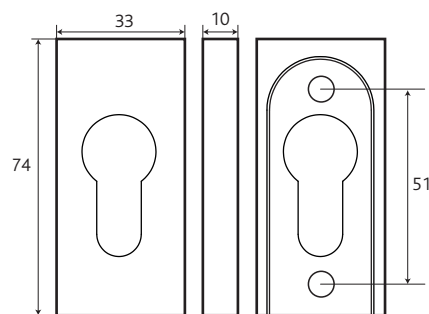
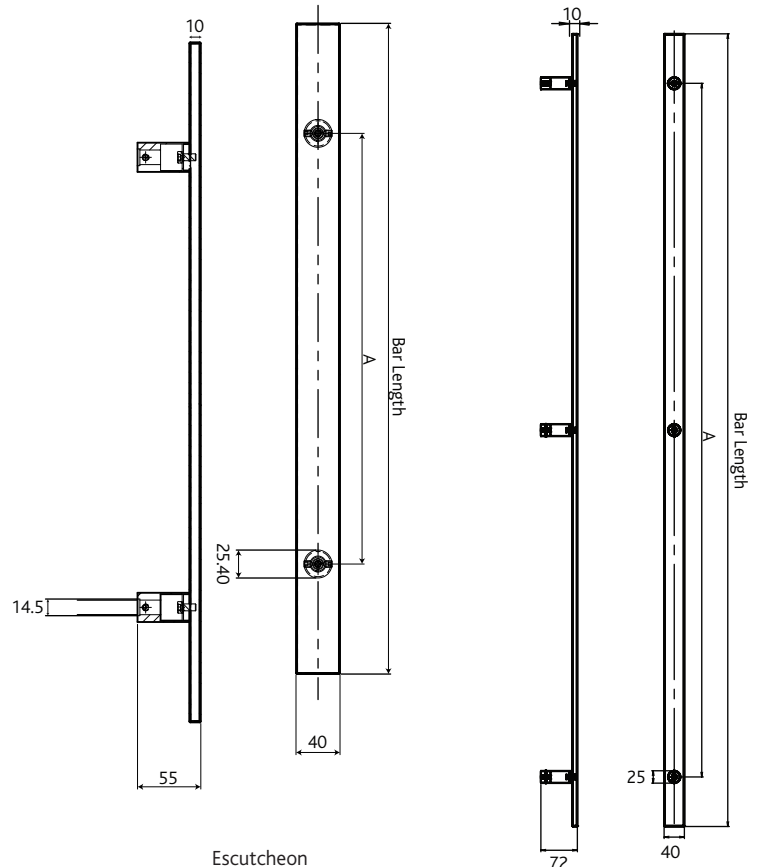
Salt spray tested to 2000 hours (BS EN1670: Grade 5)  
Load tested to 1500N

### Material Specification

Body:	316 Stainless Steel
Coatings:	Brushed Steel

Lengths 400, 600,  
800, 1000 and 1200mm  
(two fix)

Lengths 1400,  
1600, 1800mm  
(three fix)



All dimensions are in mm and are nominal.  
Fab&Fix reserves the right to change specification without notice.  
It is the responsibility of the door manufacturer to ensure that the finished product meets any required safety and performance specification.

### Maintenance

To maintain your stainless steel product in best condition, we recommend routine cleaning once a month. All exposed stainless steel surfaces should be wiped over with a clean cloth and warm water with a mild detergent on a frequent and routine basis. Cleaning should always be immediately followed by rinsing in clean hot water and the surface then wiped completely with a dry towel. For more stubborn dirt or stains use mild, non-scratching abrasive powders such as typical household cleaners. These can be used with bristle brushes, sponges or non-abrasive scourers. For more aggressive cleaning a small amount of vinegar can be added to the powder. Carbon steel brushes and steel wool should be avoided as they may leave particles embedded in the surface, which can lead to rusting.