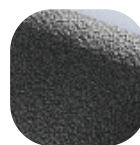
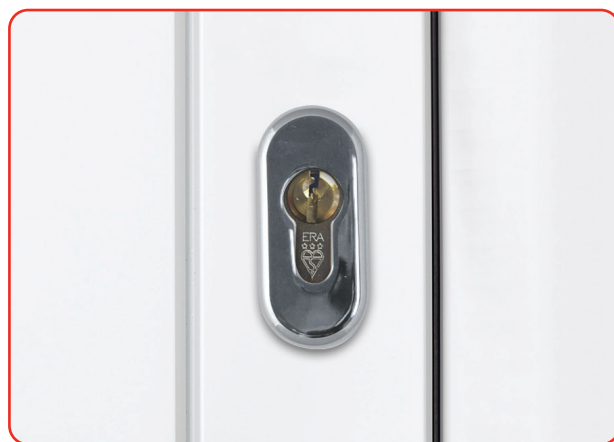


Architectural Oval Cylinder Escutcheon



Features

- **Stylish cylinder escutcheon**
For use with a Euro profile cylinder
- **74mm oval escutcheon**
Perfectly sized to fit most door types
- **Sliding cover fixing for cylinder protection**
Internally fixed prevents access to the cylinder by removing the escutcheon
- **All parts for a door included with one package**
Supplied as a pair with internal and external parts boxed
- **Designed for Composite, Timber and PVCu doors**
To suit all door materials
- **Available in the complete range of Hardex finishes**
Perfectly matching to the full Fab&Fix range of products
- **Face Fitted**
Suitable for all locking mechanisms



Antique
Black



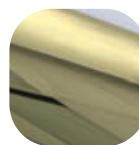
White



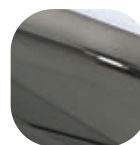
Black



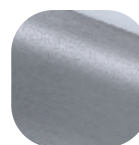
Hardex
Chrome



Hardex
Gold



Hardex
Bronze



Hardex
Graphite

Architectural Oval Cylinder Escutcheon

Ordering Details

Architectural Oval Cylinder Escutcheon

Finish	74mm Oval Part No.
Hardex chrome	4F052
Hardex Bronze	4F053
Hardex Gold	4F054
Hardex Graphite	4F055
Antique Black	4F056
White	4F050
Black	4F051

Technical Information

Corrosion resistance

Meets the requirements of BS EN 1670:2007 Grade 5 (480 hours)

Material Specification

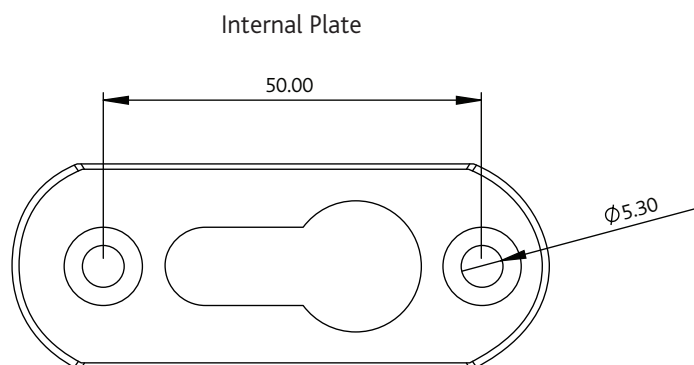
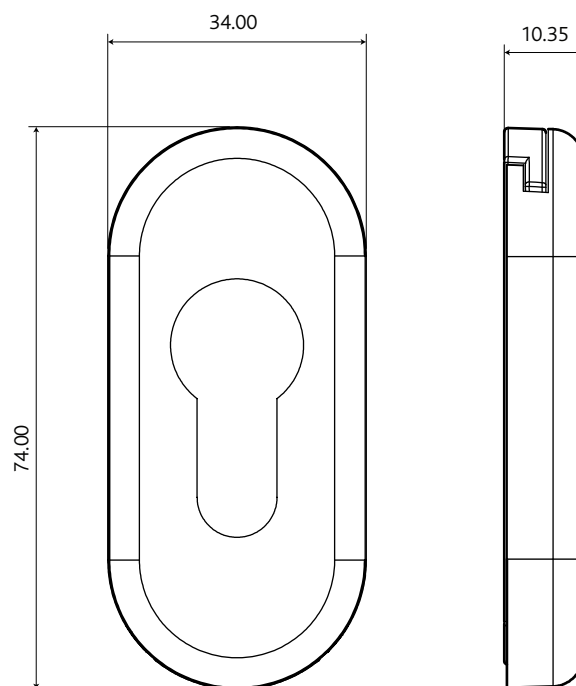
Escutcheon:	High quality zinc
Coatings:	Hardex Chrome, Hardex Gold, Hardex Bronze, Hardex Graphite, White, Black and Antique Black

Maintenance

For continued protection of the quality finish and appearance, we advise routine cleaning of all our external hardware. We recommend wiping it with a clean cloth soaked in warm water and mild detergent every month. Please refrain from using heavy-duty cleaners, containing Chlorine or Potassium. Moving parts should also be lightly lubricated using a light non-acidic mineral oil (e.g., "3 in 1") at least twice per year. The product may need to be adjusted and fixings tightened to ensure a satisfactory operation. This procedure is particularly essential if products are used within a 25-mile radius of coastal areas or close proximity to building sites or large industrial areas, where more frequent cleaning may be required to prevent the accumulation of corrosive contaminants.

Packaging

Escutcheons – Internal and external parts, individually boxed with care instructions. 48 escutcheons in an outer box.



All dimensions are in mm.

Fab&Fix reserves the right to change specification without notice. It is the responsibility of the door manufacturer to ensure that the finished product meets any required safety and performance specification