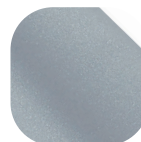


### Craftsman Casement Stay Bar Locking



#### Features

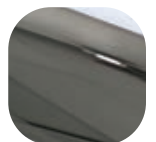
- **Solid die cast Zinc construction**  
Heavyweight stay bar with sturdy feel
- **Classic design with a contemporary twist**  
Create an elegant and stylish window
- **Matching casement fastener available**  
Perfectly matching hardware for every application
- **Supplied with colour matching screws**  
Perfectly matching hardware, even down to the smallest details
- **Key clicks into place when inserted**  
Won't fall out of the lock, even when pivoting the lever
- **Non handed**  
Universal handle suitable for left and right handed windows, reduces stock holding



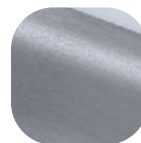
Premium  
Satin



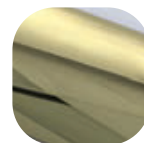
Hardex  
Chrome



Hardex  
Bronze



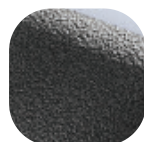
Hardex  
Graphite



Hardex  
Gold



White



Antique  
Black



Black

### Craftsman Casement Stay Bar Locking

#### Ordering Details

#### Product

#### Craftsman Casement Stay Bar Locking

#### Finish

#### Part No.

Hardex Chrome	0J201
Hardex Bronze	0J203
Hardex Gold	0J205
Hardex Graphite	WSACRGRLK
Antique Black	0J206
White	0J200
Black	8A048
Premium Satin	WSACRPSLK

For additional part numbers please contact our sales office.

#### Technical Information

##### Corrosion resistance

Meets the requirements of BS EN 1670:2007 Grade 5 (480 hours)

#### Material Specification

Stay Bar and Plates:	High quality Zinc for all finishes
Coatings:	Hardex Chrome, Bronze, Gold, Antique Black, White and Black.

#### Maintenance

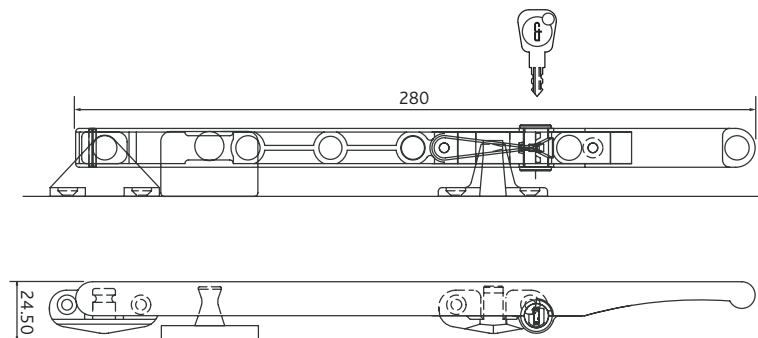
For continued protection of the quality finish and appearance, we advise routine cleaning of all our external hardware. We recommend wiping it with a clean cloth soaked in warm water and mild detergent every month. Please refrain from using heavy-duty cleaners, containing Chlorine or Potassium. Moving parts should also be lightly lubricated using a light non-acidic mineral oil (e.g., "3 in 1") at least twice per year. The product may need to be adjusted and fixings tightened to ensure a satisfactory operation. This procedure is particularly essential if products are used within a 25-mile radius of coastal areas or close proximity to building sites or large industrial areas, where more frequent cleaning may be required to prevent the accumulation of corrosive contaminants.

#### Packaging

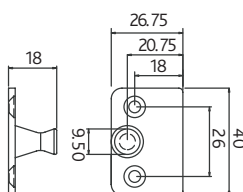
##### Stay Bars

Individually bagged with screws and care instructions.  
40 stay bars in an outer box.

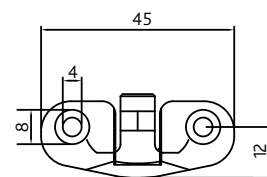
Stay



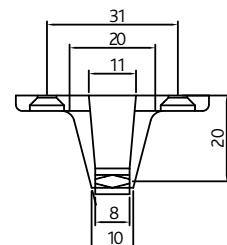
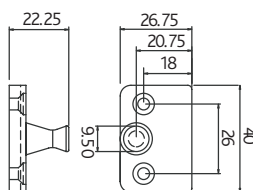
0° Peg Plate



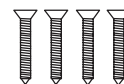
Hook Plate



9° Peg Plate



Screws x 4



All dimensions are in mm and are nominal.  
Fab&Fix reserves the right to change specification without notice.  
It is the responsibility of the window manufacturer to ensure that the finished product meets any required safety and performance specification.