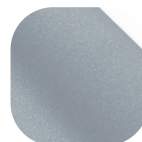


Craftsman Casement Fastener Non Locking



Features

- **Solid die cast Zinc construction**
Heavyweight handle with sturdy feel
- **Classic design with a contemporary twist**
Create an elegant and stylish window
- **Matching casement stay available**
Perfectly matching hardware for every application
- **Supplied with colour matching screws**
Perfectly matching hardware, even down to the smallest details
- **Dedicated non locking handle**
Conforms to building regulations for non locking windows



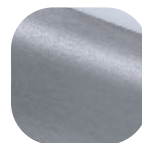
Premium
Satin



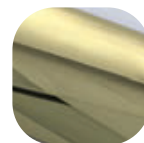
Hardex
Chrome



Hardex
Bronze



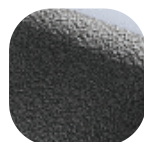
Hardex
Graphite



Hardex
Gold



White



Antique
Black



Black

Craftsman Casement Fastener Non Locking

Ordering Details

Product

Craftsman Casement Fastener Non Locking

Finish Part No.

Hardex Chrome	OJ101
Hardex Bronze	OJ103
Hardex Gold	OJ105
Hardex Graphite	WHACMGRNL
Antique Black	OJ106
White	OJ100
Black	8A047
Premium Satin	WHACMPSNL

For additional part numbers please contact our sales office.

Technical Information

Corrosion resistance

Meets the requirements of BS EN 1670:2007 Grade 5 (480 hours)

Operation

Endurance tested in excess of 50,000 cycles

Performance

Tested to meet the requirements of PAS 24 as part of a compliant window

Material Specification

Handle Grip and Backplate: High quality Zinc for all finishes

Coatings: Hardex Chrome, Satin, Bronze, Gold, Antique Black, White and Black.

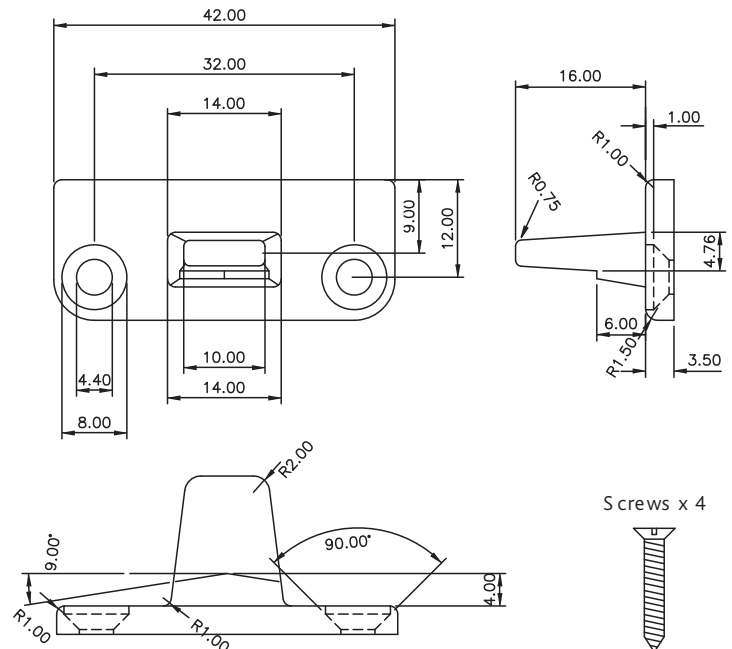
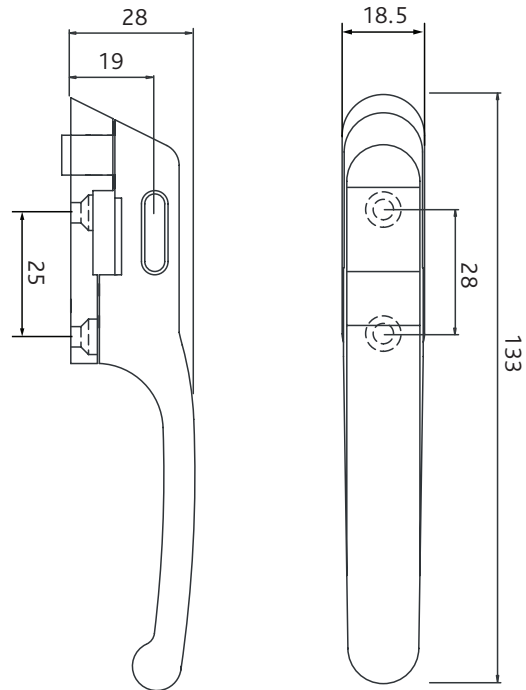
Maintenance

For continued protection of the quality finish and appearance, we advise routine cleaning of all our external hardware. We recommend wiping it with a clean cloth soaked in warm water and mild detergent every month. Please refrain from using heavy-duty cleaners, containing Chlorine or Potassium. Moving parts should also be lightly lubricated using a light non-acidic mineral oil (e.g., "3 in 1") at least twice per year. The product may need to be adjusted and fixings tightened to ensure a satisfactory operation. This procedure is particularly essential if products are used within a 25-mile radius of coastal areas or close proximity to building sites or large industrial areas, where more frequent cleaning may be required to prevent the accumulation of corrosive contaminants.

Packaging

Handles

Individually bagged with screws and care instructions.
40 handles in an outer box.



All dimensions are in mm and are nominal.

Fab&Fix reserves the right to change specification without notice

It is the responsibility of the window manufacturer to ensure that the finished product meets any required safety and performance specification.