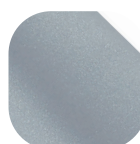


### Craftsman Casement Fastener Locking



#### Features

- **Solid die cast Zinc construction**  
Heavyweight handle with sturdy feel
- **Classic design with a contemporary twist**  
Create an elegant and stylish window
- **Matching casement stay available**  
Perfectly matching hardware for every application
- **Supplied with colour matching screws**  
Perfectly matching hardware, even down to the smallest details
- **Key clicks into place when inserted**  
Won't fall out of the lock, even when pivoting the lever



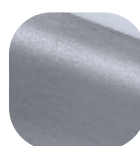
Premium  
Satin



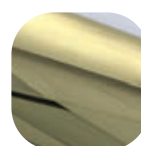
Hardex  
Chrome



Hardex  
Bronze



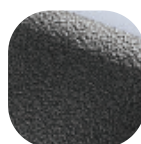
Hardex  
Graphite



Hardex  
Gold



White



Antique  
Black



Black

### Craftsman Casement Fastener Locking

#### Ordering Details

#### Product

#### Craftsman Casement Fastener Locking

Finish	Part No.
Hardex Chrome	0J001
Hardex Bronze	0J003
Hardex Gold	0J005
Hardex Graphite	WHACMGRK
Antique Black	0J006
White	0J000
Black	8A046
Premium Satin	WHACMPSLK

For additional part numbers please contact our sales office.

#### Technical Information

##### Corrosion resistance

Meets the requirements of BS EN 1670:2007 Grade 5 (480 hours)

##### Operation

Endurance tested in excess of 50,000 cycles

##### Performance

Tested to meet the requirements of PAS 24 as part of a compliant window

#### Material Specification

Handle Grip and Backplate:	High quality Zinc for all finishes
Coatings:	Hardex Chrome, Bronze, Gold, Antique Black, White and Black.

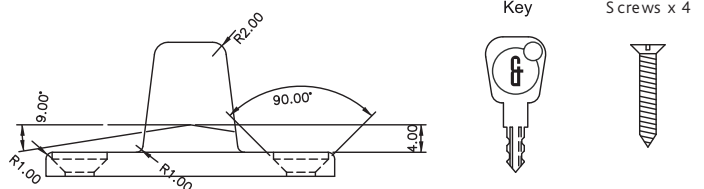
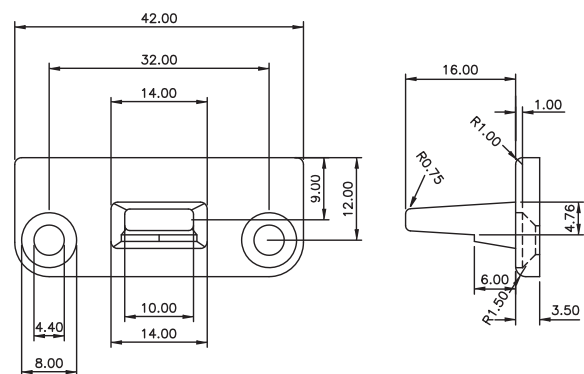
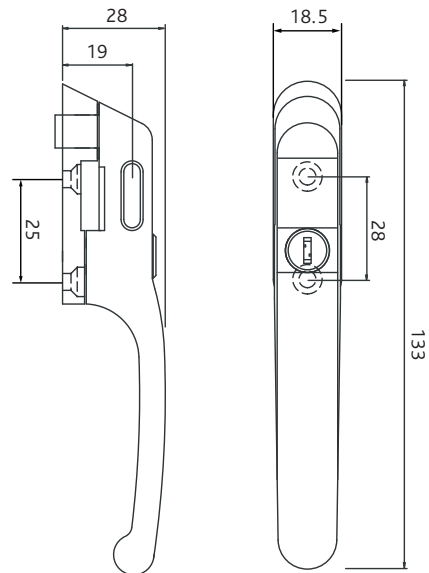
#### Maintenance

For continued protection of the quality finish and appearance, we advise routine cleaning of all our external hardware. We recommend wiping it with a clean cloth soaked in warm water and mild detergent every month. Please refrain from using heavy-duty cleaners, containing Chlorine or Potassium. Moving parts should also be lightly lubricated using a light non-acidic mineral oil (e.g., "3 in 1") at least twice per year. The product may need to be adjusted and fixings tightened to ensure a satisfactory operation. This procedure is particularly essential if products are used within a 25-mile radius of coastal areas or close proximity to building sites or large industrial areas, where more frequent cleaning may be required to prevent the accumulation of corrosive contaminants.

#### Packaging

##### Handles

Individually bagged with screws and care instructions.  
40 handles in an outer box.



All dimensions are in mm and are nominal.  
Fab&Fix reserves the right to change specification without notice.  
It is the responsibility of the window manufacturer to ensure that the finished product meets any required safety and performance specification.