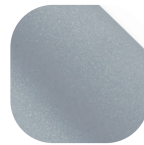


Connoisseur Offset Locking

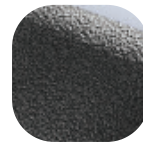


Features

- **Solid die cast construction**
Heavyweight handle with sturdy feel
- **Heavy duty sprung latching wedge**
Positive click on closing
- **Long handle**
Greater leverage and easy to operate without catching a hand on the window
- **Classic design with a contemporary twist**
Create an elegant and stylish window
- **Patented cover caps with colour coordinated finish**
Perfectly matching components, even down to the smallest details
- **Secured By Design**
Additional peace of mind
- **Key clicks into place when inserted**
Won't fall out of the lock, even when pivoting the lever
- **Slotted spindle (40mm version only)**
Allows cropping to 5mm increments
- **Supplied with screw and spindle pack**
Everything needed for installation included



Premium Satin



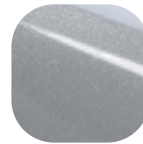
Antique Black



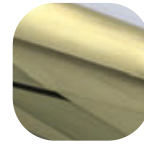
Hardex Chrome



White



Silver



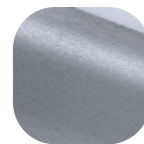
Hardex Gold



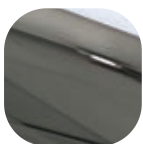
Black



Anthracite Grey



Hardex Graphite



Hardex Bronze

Maintenance

For continued protection of the quality finish and appearance, we advise routine cleaning of all our external hardware. We recommend wiping it with a clean cloth soaked in warm water and mild detergent every month. Please refrain from using heavy-duty cleaners, containing Chlorine or Potassium. Moving parts should also be lightly lubricated using a light non-acidic mineral oil (e.g., "3 in 1") at least twice per year. The product may need to be adjusted and fixings tightened to ensure a satisfactory operation. This procedure is particularly essential if products are used within a 25-mile radius of coastal areas or close proximity to building sites or large industrial areas, where more frequent cleaning may be required to prevent the accumulation of corrosive contaminants.



10 YEAR
MECHANICAL
GUARANTEE



PVCu



Timber



Secured by Design



Police Preferred Specification

Connoisseur Offset Locking

Ordering Details

Product

Connoisseur Offset Locking - Right Hand

Finish	Part No.						
Spindle Size	10mm	15mm	20mm	25mm	30mm	35mm	40mm
Hardex Chrome	OD021	OD041	OD061	OD081	OD101	OD121	OD141
Hardex Bronze	OD023	OD043	OD063	OD083	OD103	OD123	OD143
Hardex Gold	OD025	OD045	OD065	OD085	OD105	OD125	OD145
Hardex Graphite	-	OD048	OD068	-	OD108	OD128	OD148
Antique Black	OD026	OD046	OD066	OD086	OD106	OD126	OD146
White	OB020	OB040	OB060	OB080	OB100	OB120	OB140
Black	OB021	OB041	OB061	OB081	OB101	OB121	OB141
Silver	OB022	OB042	OB062	OB082	OB102	OB122	OB142
Anthracite Grey	-	OB043	OB064	-	OB104	-	OB144
Premium Satin	WHACOPSRL10	WHACOPSRL15	WHACOPSRL20	-	WHACOPSRL30	WHACOPSRL35	WHACOPSRL40

Connoisseur Offset Locking - Left Hand

Finish	Part No.						
Spindle Size	10mm	15mm	20mm	25mm	30mm	35mm	40mm
Hardex Chrome	OD321	OD341	OD361	OD381	OD401	OD421	OD441
Hardex Bronze	OD323	OD343	OD363	OD383	OD403	OD423	OD443
Hardex Gold	OD325	OD345	OD365	OD385	OD405	OD425	OD445
Hardex Graphite	-	OD348	OD368	-	OD408	OD428	OD448
Antique Black	OD326	OD346	OD366	OD386	OD406	OD426	OD446
White	OB320	OB340	OB360	OB380	OB400	OB420	OB440
Black	OB321	OB341	OB361	OB381	OB401	OB421	OB441
Silver	OB322	OB342	OB362	OB382	OB402	OB422	OB442
Anthracite Grey	-	OB343	OB364	-	OB404	-	OB444
Premium Satin	WHACOPSL10	WHACOPSL15	WHACOPSL20	-	WHACOPSL30	WHACOPSL35	WHACOPSL40

For additional part numbers please contact our sales office.

Technical Information

Corrosion resistance

Meets the requirements of BS EN 1670:2007 Grade 5 (480 hours)

Operation

Endurance tested in excess of 25,000 cycles

Performance

Tested to meet the requirements of PAS 24 as part of a compliant window

Material Specification

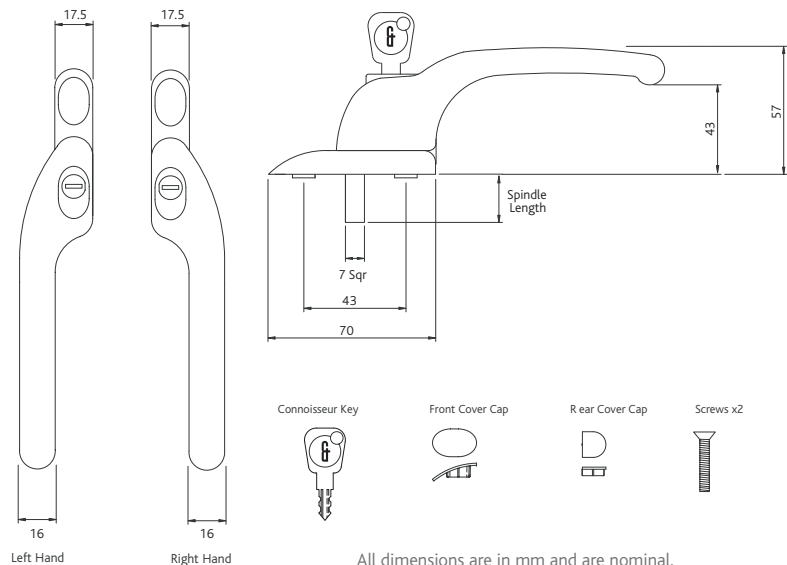
Handle Grip and Backplate: High quality Zinc for all Hardex finishes and Antique Black.
High quality Aluminium for Premium Satin, White, Black and Silver finishes

Coatings: Hardex Chrome, Hardex Bronze, Hardex Gold, Hardex Graphite, Antique Black, Premium Satin, White, Black and Silver

Packaging

Handles

Individually bagged with screws, key, cover caps and care instructions.
4 handles in an inner box, 40 handles in an outer box.



All dimensions are in mm and are nominal.
Fab&Fix reserves the right to change specification without notice
It is the responsibility of the window manufacturer to ensure that the finished product meets any required safety and performance specification.