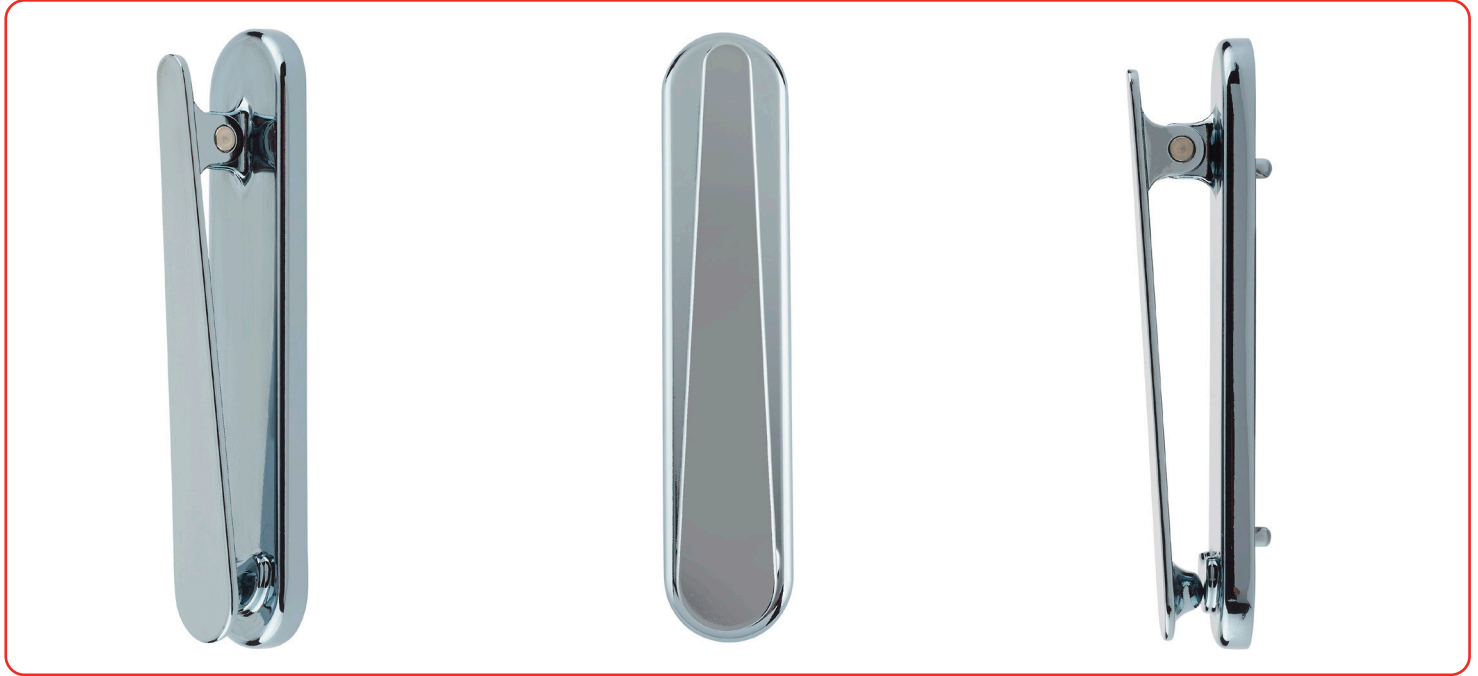


Contemporary Door Knocker

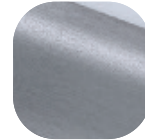


Features

- **Patented face fixed plate works with all major door materials**
Easy installation; no need to use fixing bolts or to drill through the door
- **Contemporary design**
Create a modern and elegant front door



Hardex Chrome



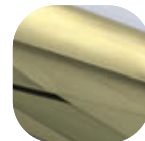
Hardex Graphite



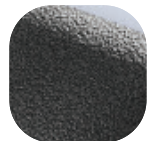
White



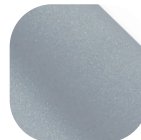
Hardex Bronze



Hardex Gold



Antique Black



Premium Satin

Contemporary Door Knocker

Ordering Details

Product

Contemporary Door Knocker

Finish	Part No.
White	DFNKNCOWH
Hardex Chrome	DFNKNCOHC
Hardex Bronze	DFNKNCOHB
Hardex Gold	DFNKNCOHG
Hardex Graphite	DFNKNCOGR
Antique Black	DFNKNCOAB
Premium Satin	DFNKNCOPS

Technical Information

Corrosion resistance

Meets the requirements of BS EN 1670 Grade 5 (480 hours)

Material Specification

Knocker:	High quality Zinc
Coatings:	Hardex Chrome, Hardex Bronze, Hardex Gold, Hardex Graphite, Antique Black, Premium Satin and White.

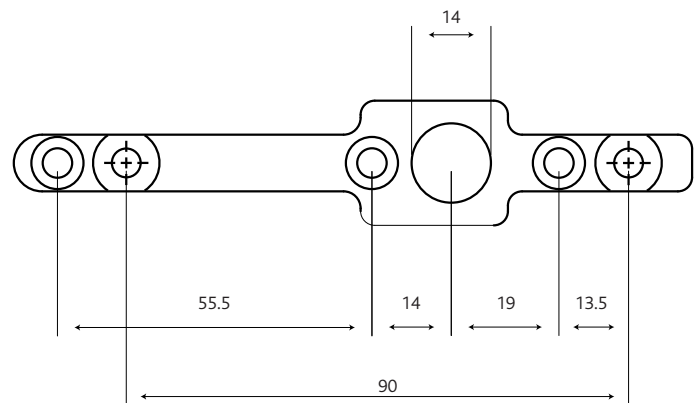
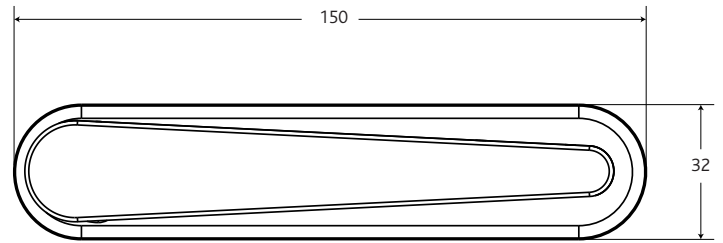
Maintenance

For continued protection of the quality finish and appearance, we advise routine cleaning of all our external hardware. We recommend wiping it with a clean cloth soaked in warm water and mild detergent every month. Please refrain from using heavy-duty cleaners, containing Chlorine or Potassium. Moving parts should also be lightly lubricated using a light non-acidic mineral oil (e.g., "3 in 1") at least twice per year. The product may need to be adjusted and fixings tightened to ensure a satisfactory operation. This procedure is particularly essential if products are used within a 25-mile radius of coastal areas or close proximity to building sites or large industrial areas, where more frequent cleaning may be required to prevent the accumulation of corrosive contaminants.

Packaging

Contemporary Knocker

Individually boxed with fixing bracket.
20 knockers in an outer box.



All dimensions are in mm and are nominal.

Fab&Fix reserves the right to change specification without notice. It is the responsibility of the door manufacturer to ensure that the finished product meets any required safety and performance specification.