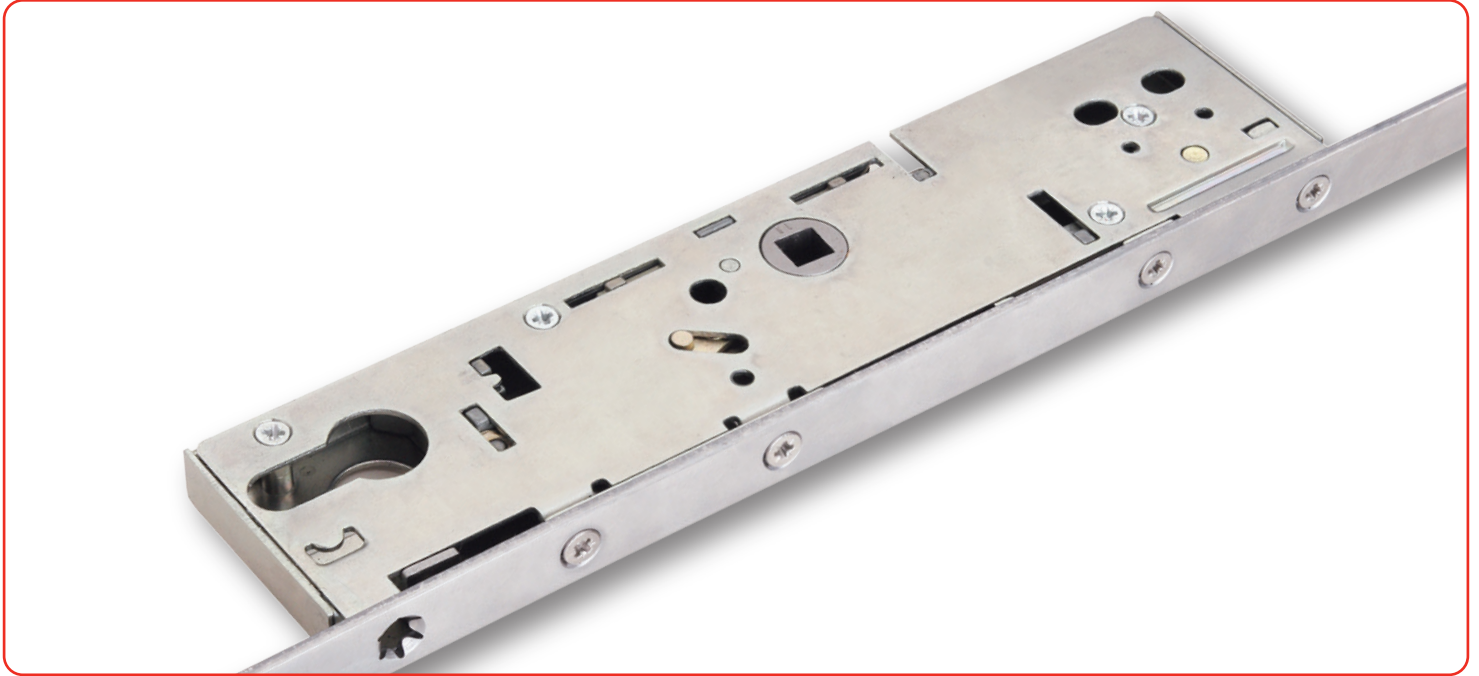


# ERA

Multi-Point Locks  
for PVCu, Timber and Composite

FRENCH PATIO  
& SLIDING DOORS

## Passive Euro Cylinder Door Lock



### Features

- Available as 30mm, 35mm and 45mm Backsets, with 16mm face bar
- Non-handed mechanism to minimise stock requirements
- Accepts standard 92mm unsprung handles and euro profile cylinders (operates with all BS and DIN specification cylinders and most other types of cylinder)
- Adjustable steel keeps giving  $\pm 2.0\text{mm}$
- Easy-fit packer system for alternative profiles
- Shootbolt engagement for additional security



Shoot Keeps



Shootbolt

10  
YEAR

Mechanical  
Guarantee



### Passive Euro Cylinder Door Lock

#### Ordering Details

To select the required passive MPL part number, use the tables below to determine:

1. The backset
2. The overall length of the unit

#### KEY

|           |  |
|-----------|--|
| <b>B</b>  | Backset  |
| <b>DL</b> | Datum Line   |
| <b>OL</b> | Overall Length - Including shootbolts<br>Maximum length illustrated.<br>Bars can be shortened by maximum 30mm top and bottom |

#### Locking Mechanism

| B  | DL   | OL   | Part No.     |
|----|------|------|--------------|
| 30 | 1050 | 2250 | 6530-00-85AA |
| 35 | "    | "    | 6535-00-85AA |
| 45 | "    | "    | 6545-00-85AA |

#### Shootbolt (sold separately)

| Description                              | Part No.   |
|--|------------|
| High Security Shoot Bolt                 | 5650-85    |
| High Security Shoot Bolt - 20mm          | 5650-20-85 |
| High Security Shoot Bolt - SS 430        | 5670-79    |
| High Security Shoot Bolt - Low Threshold | 5654-85    |
| High Security Shoot Bolt - With Roller   | 5651-20-85 |

To be used in conjunction with primary leaf for French doors

#### Extension Piece (sold separately)

| Description           | Part No. |
|-----------------------|----------|
| 525mm Extension Piece | 5660-85  |

#### Technical Information

##### Corrosion resistance

Meets the requirements of BS EN 1670:2007 Grade 4 (240 hours)

##### Material Specification

|                    |                                |
|--------------------|--------------------------------|
| Lock case:         | Steel BZP CR3 Passivate + Seal |
| Face bar:          | Steel BZP CR3 Passivate + Seal |
| Shoots/Ext. Piece: | Steel BZP CR3 Passivate + Seal |
| Keeps:             | Steel BZP CR3 Passivate + Seal |

#### Packaging

**Locks:**  
5 locks per box

#### Maintenance

All moving parts should be lightly lubricated using a light non-acidic mineral oil (e.g. "3 in 1") twice per year and the surface cleaned with a soft damp cloth. The product may need to be adjusted and fixings tightened to ensure a satisfactory operation.

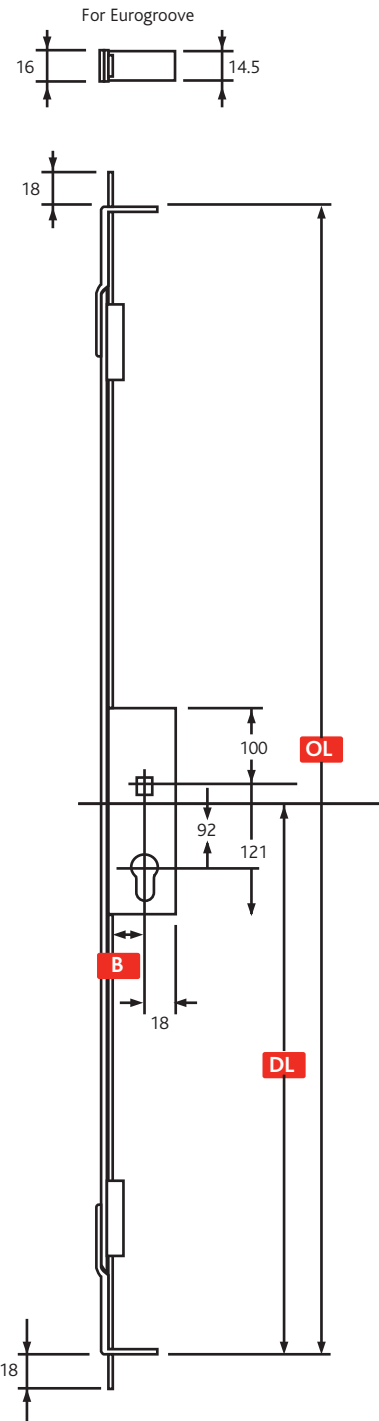


Diagram illustrates product in locked position.  
All dimensions are in mm and are nominal.

ERA reserves the right to change specification without notice  
It is the responsibility of the door manufacturer to ensure that  
the finished product meets any required safety and performance specification.