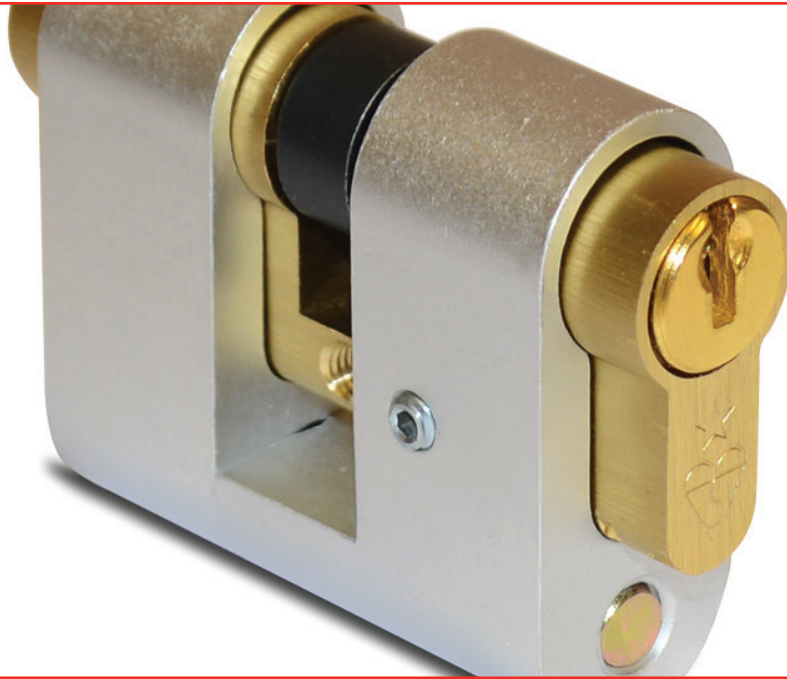
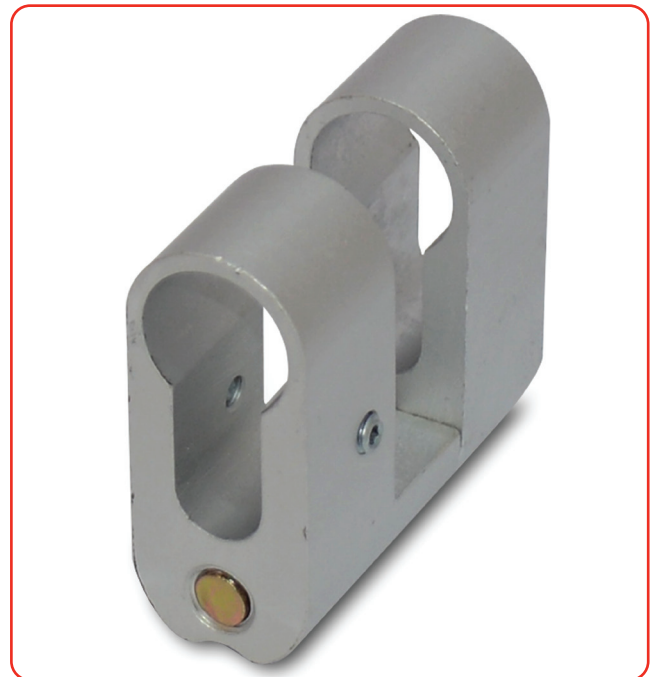


Double Euro Cylinder Guard

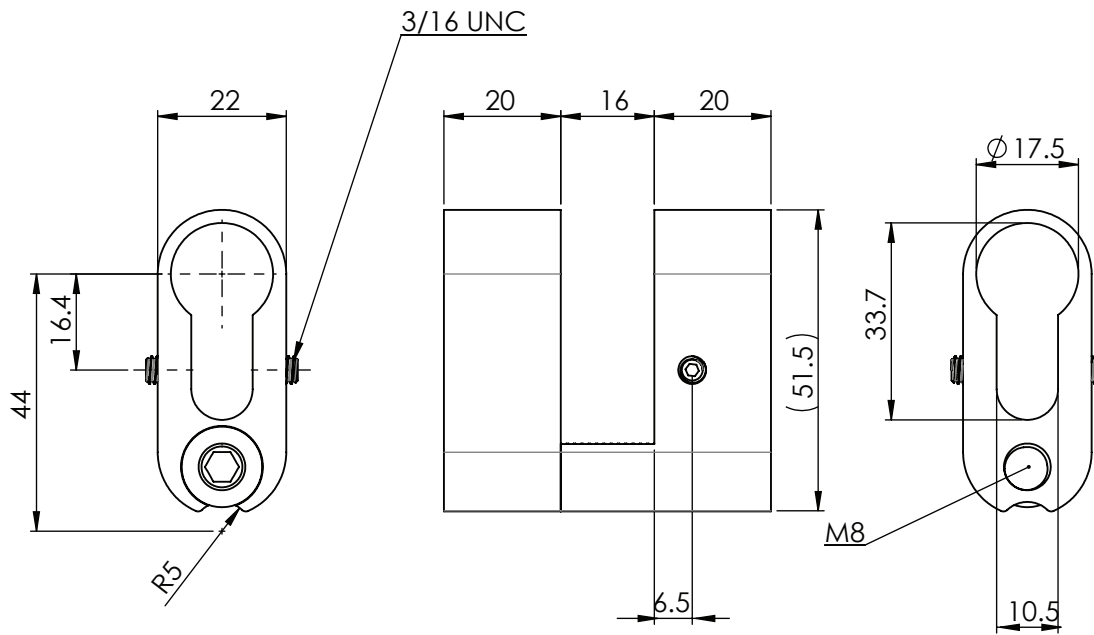


Features

- Designed to prevent forced entry by securing the euro profile locking cylinder to the door
- The clamp is positioned and secured to the locking cylinder by two grub screws
- The cylinder is re-positioned within the door lock and the clamp secured in place by fixing bolts drilled through the door
- Designed to meet the latest security requirements of PAS 024:2012, the device will prevent forced entry through the removal of the profile cylinder by securing it to the door
- The cylinder guard is a practical solution that will substantially improve the security of most doors.



Double Euro Cylinder Guard



Ordering Details

Cylinder Guard

Product	Part No.
Double Euro Cylinder Guard	DCLSCO0010P

Not to scale.

All dimensions are in mm and are nominal.

ERA reserves the right to change specification without notice.

It is the responsibility of the door manufacturer to ensure that the finished product meets any required safety and performance specification.

Technical Information

Corrosion resistance

Meets the requirements of BS EN 1670:2007 Grade 4

Operation

Designed to meet the requirements of PAS 024:2012 in a compliant door set

Material Specification

Clamp:	Extruded Aluminium
Bolts:	8mm diameter high tensile steel 59mm long
Grub Screws:	Black carbon steel 2mm

Packaging

Cylinder Guard

Outer box of 500

Maintenance

All moving parts should be lightly lubricated using a light non-acidic mineral oil (e.g. "3 in 1") twice per year and the surface cleaned with a soft damp cloth. The product may need to be adjusted and fixings tightened to ensure a satisfactory operation.