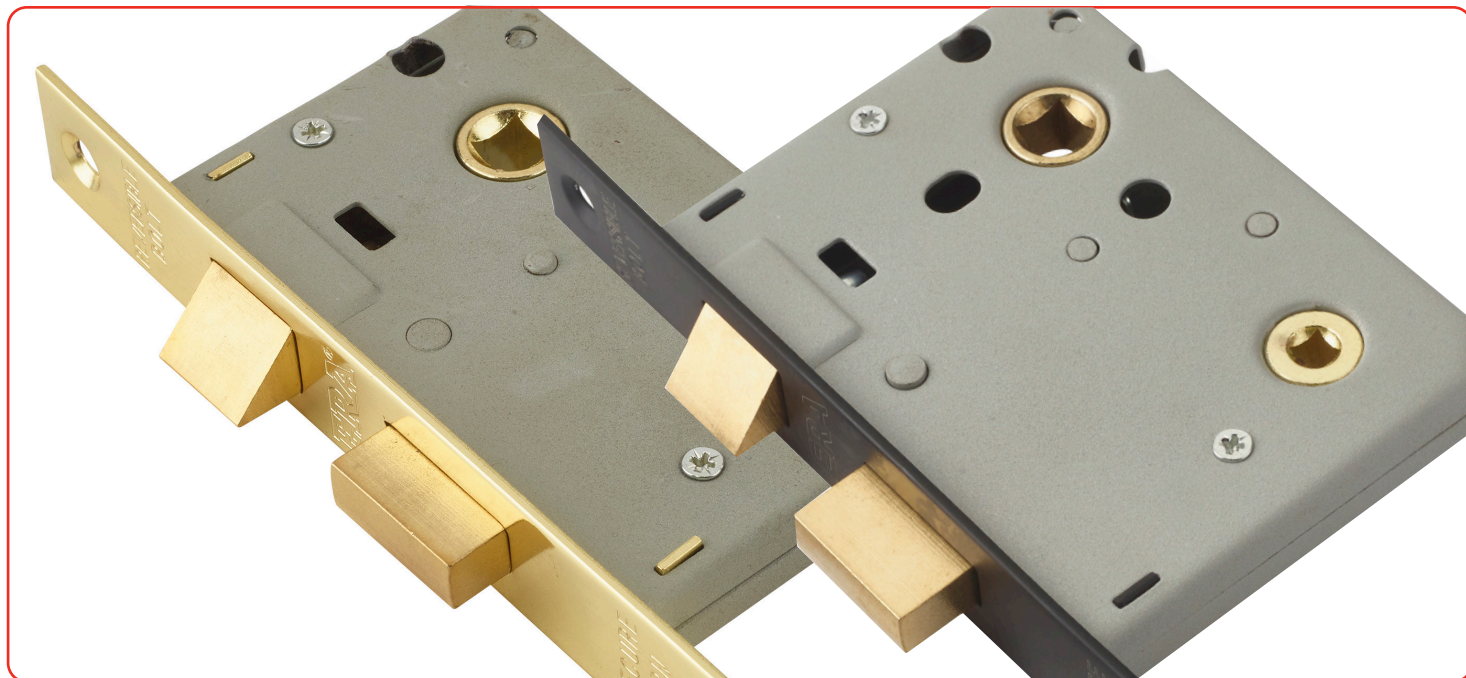


Bathroom Door Lock



Features

- Specially designed for bathroom doors
- Features a deadbolt which is operated by a thumbturn handle
- Easily reversible latch bolt, fitting both left and right hinged inward or outward opening doors
- Available in 64mm (2½") and 76mm (3") backset
- Brass Effect, Chrome Effect and Matte Black finishes available
- Bolt through fixings on 3" (76mm)



2.5" (64mm) Version



3" (76mm) Version

Bathroom Door Lock

Ordering Details

Bathroom Door Lock

Finish	Part No. Clam Version	Part No. Boxed Version
Brass Effect 64mm (2½")	243-32	243-31
Chrome Effect 64mm (2½")	243-62	243-61
Matte Black 64mm (2½")	243-MB-2	243-MB-1
Brass Effect 76mm (3")	343-32	343-31
Chrome Effect 76mm (3")	343-62	343-61
Matte Black 76mm (3")	343-MB-2	343-MB-1

Rounded forends and keeps available, please contact the sales department for more information. Additional packaging options may be available, please contact the sales department for more information.

Packaging

Boxed version

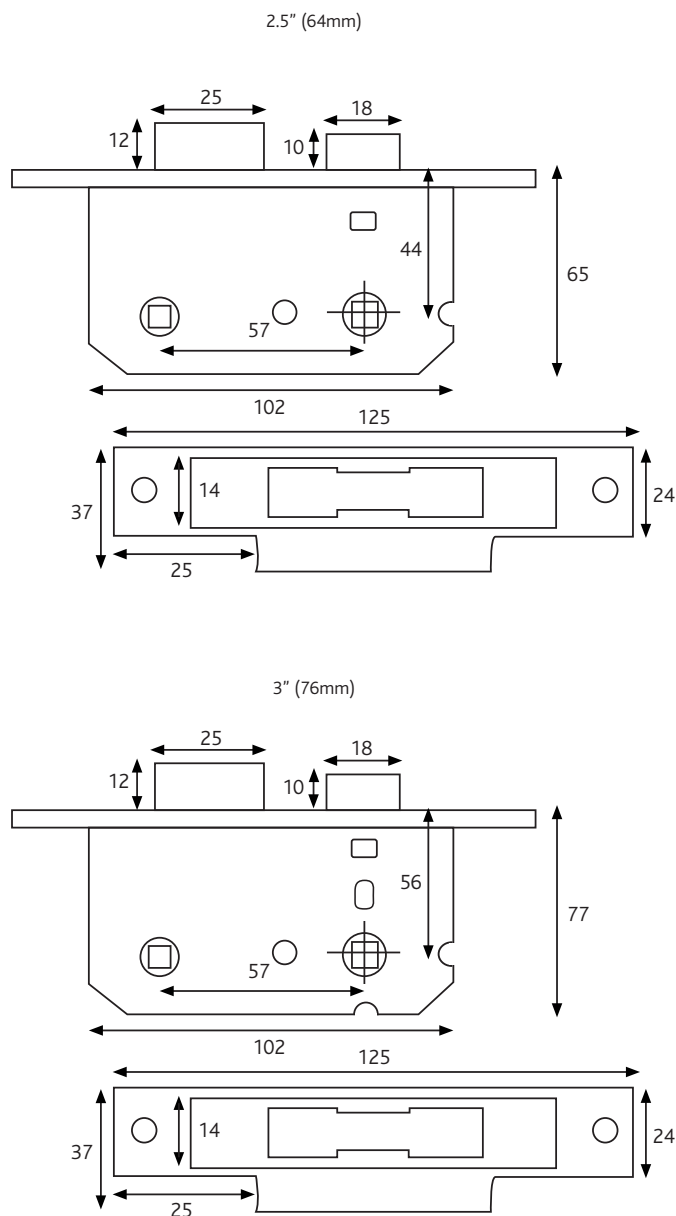
1 lock per inner box, 10 locks per outer box.
0.42Kg per item, 4.2Kg per outer box

Clam version

Plastic packaging with euro hooks. 1 lock per pack, 5 retail boxes per outer box. 0.4Kg per item, 2.0Kg per outer box

Maintenance

Wipe the surface periodically with a soft cloth to remove excess grease or moisture.



All dimensions are in mm and are nominal. 3" version of lock (343) has bolt through fixings. Diagram illustrates product in locked position.

ERA reserves the right to change specification without notice

It is the responsibility of the door manufacturer to ensure that the finished product meets any required safety and performance specification.