

Kensington Inline Lever Pad

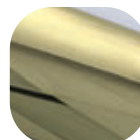


Features

- **Solid die cast zinc construction with heavy duty spring cassette**
Sturdy feel and consistent 90 degree lever return
- **3 x M6 screw fixings and anti-grab chamfered baseplate**
Combats lever attack and grab attack with pliers or wrench
- **Large heavy duty lever and low friction nylon bush**
Easy to grip and operate, smooth action
- **Supplied with screw pack to suit 44-54mm composite doors**
Everything needed for installation included
- **Colour coordinated screw heads**
Perfectly matching hardware, even down to the smallest details
- **Baseplate common with all Kensington handles**
Same routing detail regardless of product variant chosen
- **Integrated steel strengthening plate**
Cylinder protection as standard
- **Wide backplate**
To suit cylinder guards and accommodate larger cylinder preparation
- **Supplied with care instructions**
Helps the homeowner to keep the hardware in optimal condition
- **Supplied fully assembled**
Simple and quick installation, no need to fit springs or lever
- **Each part packaged in a separate chamber, but supplied as a set**
No scratching of parts during transit



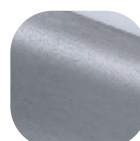
Hardex
Chrome



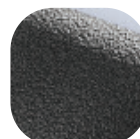
Hardex
Gold



Hardex
Bronze



Hardex
Graphite



Antique
Black



Black



White

Kensington Inline Lever Pad

Ordering Details

Product

Kensington Inline Lever Pad

Finish	Part No.
Hardex Chrome	1G051
Hardex Bronze	1G053
Hardex Gold	1G055
Hardex Graphite	1G058
Antique Black	1G056
White	1G050
Black	8B065

Technical Information

Corrosion resistance

Meets the requirements of BS EN 1670:2007 Grade 5 (480 hours)

Operation

Endurance tested in excess of 200,000 cycles

Performance

Tested to meet the requirements of PAS 24 as part of a compliant door set

Material Specification

Handle Grip and Backplate:	High quality Zinc for all finishes
Coatings:	Hardex Chrome, Hardex Bronze, Hardex Gold, Hardex Graphite, Antique Black, White and Black
Screws:	Machine screws with colour coordinated heads for handle. 44mm - 54mm profiles (1 x 8mm x 110mm spindle; 3 x M6 x 60mm screws). Additional screw packs to suit 60mm-70mm profile available, please contact our sales office.
Cylinder:	Euro Cylinder, 92mm PZ

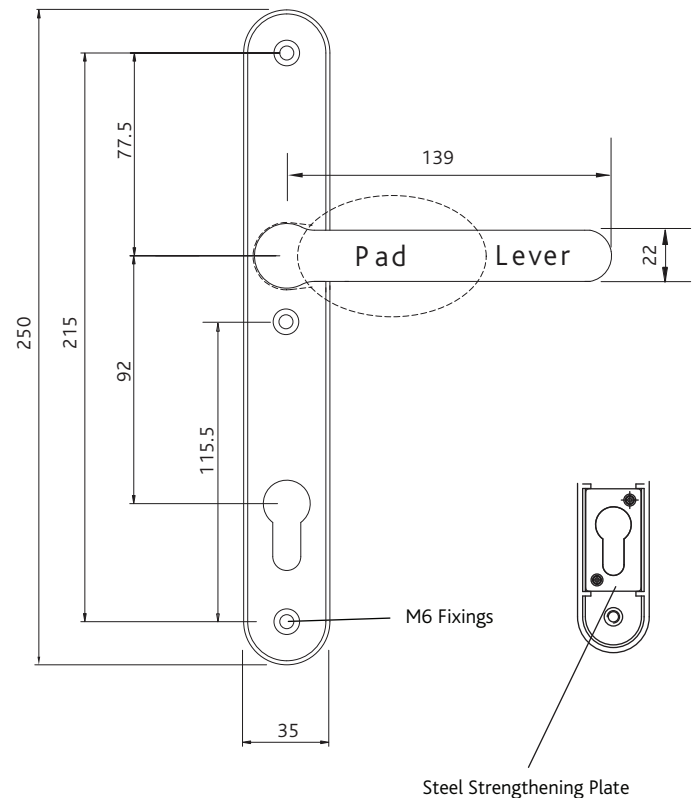
Maintenance

For continued protection of the quality finish and appearance, we advise routine cleaning of all our external hardware. We recommend wiping it with a clean cloth soaked in warm water and mild detergent every month. Please refrain from using heavy-duty cleaners, containing Chlorine or Potassium. Moving parts should also be lightly lubricated using a light non-acidic mineral oil (e.g., "3 in 1") at least twice per year. The product may need to be adjusted and fixings tightened to ensure a satisfactory operation. This procedure is particularly essential if products are used within a 25-mile radius of coastal areas or close proximity to building sites or large industrial areas, where more frequent cleaning may be required to prevent the accumulation of corrosive contaminants.

Packaging

Handles

Individually bagged with screws and care instructions.
8 handles in an outer box.



All dimensions are in mm and are nominal.
Fab&Fix reserves the right to change specification without notice.
It is the responsibility of the door manufacturer to ensure that the finished product meets any required safety and performance specification.