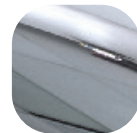


Windsor Inline for Invincible Cylinder

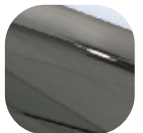


Features

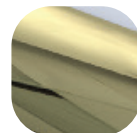
- Designed to complement the high security Invincible Cylinder and Door Lock**
 Maximising security with a newly designed robust 'squared' off cylinder that significantly strengthens against attack
- Solid die cast zinc construction with heavy duty spring cassette**
 Sturdy feel with consistent 90 degree lever return
- Sculpted ergonomic lever and low friction nylon bush**
 Easy to grip and smooth action
- Wide 28mm backplate**
 To suit the Invincible cylinder, the handle eases production tolerances whilst achieving an aesthetically balance product
- Available fully packaged for either PVCu (60-70mm) or Composite/Timber (44mm) doors**
 Quick and easy with all parts needed for installation
- Handle supplied fully assembled**
 Simple and quick installation, no need to fit springs or lever
- Colour coordinated screw heads**
 Perfectly matching hardware, even down to the smallest details
- Supplied with care instructions**
 Helps the homeowner to keep the hardware in optimal condition
- Available in the complete spectrum of Hardex finishes**
 Can be perfectly matched to the full Fab&Fix range of products
- Clever packaging designed for ease of installation and transport**
 One bag contains all parts inclusive that can be delivered separately to the installer



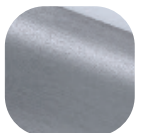
Hardex Chrome



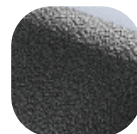
Hardex Bronze



Hardex Gold



Hardex Graphite



Antique Black



Silver



White

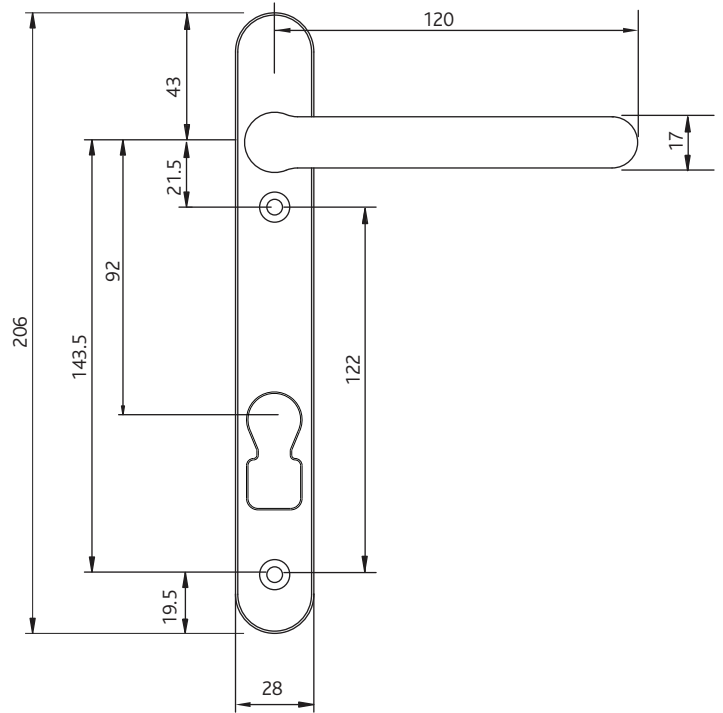


Black

Windsor Inline for Invincible Cylinder

Ordering Details		
Product		
Windsor Inline Lever Lever		
Finish	44mm Doors	70mm Doors
Hardex Chrome	1U150	1U000
Hardex Bronze	1U152	1U002
Hardex Gold	1U153	1U003
Hardex Graphite	1U155	1U005
Antique Black	1U154	1U004
White	1T100	1T000
Black	1T101	1T001
Silver	1T102	1T002

Windsor Inline Lever Pad		
Hardex Chrome	1U200	1U050
Hardex Bronze	1U202	1U052
Hardex Gold	1U203	1U053
Hardex Graphite	1U205	1U055
Antique Black	1U204	1U054
White	1T150	1T050
Black	1T151	1T051
Silver	1T152	1T052



All dimensions are in mm and are nominal.
 Fab&Fix reserves the right to change specification without notice.
 It is the responsibility of the door manufacturer to ensure that the finished product meets any required safety and performance specification.

Technical Information	
Corrosion resistance Meets the requirements of BS EN 1670:2007 Grade 5 NSST Corrosion Resistance (480 hours)	
Operation Function test to 200,000 cycles	
Performance Tested to meet the requirements of PAS 24 as part of a compliant door set	
Material Specification	
Handle Grip and Backplate:	High quality Aluminium
Coatings:	Hardex Chrome, Hardex Gold, Hardex Graphite and Antique Black
Spindle / Screws:	Mild steel, screws with colour coordinated heads for handle. Option 1 - 44mm profiles (1 x 8mm x 110mm spindle; 2 x M5 x 55mm screws) Option 2 - 60mm - 70mm profiles (1 x 8mm x 120mm spindle; 2 x M5 x 70mm and 2 x M5 x 80mm screws)
Cylinder:	ERA Invincible position

Maintenance

For continued protection of the quality finish and appearance, we advise routine cleaning of all our external hardware. We recommend wiping it with a clean cloth soaked in warm water and mild detergent every month. Please refrain from using heavy-duty cleaners, containing Chlorine or Potassium. Moving parts should also be lightly lubricated using a light non-acidic mineral oil (e.g., "3 in 1") at least twice per year. The product may need to be adjusted and fixings tightened to ensure a satisfactory operation. This procedure is particularly essential if products are used within a 25-mile radius of coastal areas or close proximity to building sites or large industrial areas, where more frequent cleaning may be required to prevent the accumulation of corrosive contaminants.

Packaging

Handles
 Individually bagged with screws, spindle and care instructions. 15 handles in an outer box