

Blenheim Offset Lever Pad



Features

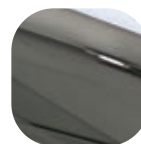
- **Solid die cast construction with heavy duty spring cassette**
Sturdy feel and consistent 90 degree lever return
- **Sculpted ergonomic lever and low friction nylon bush**
Easy to grip and smooth action
- **Supplied with screw pack to suit 60-70mm profiles**
Everything needed for installation included
- **Colour coordinated screw heads**
Perfectly matching hardware, even down to the smallest details
- **92/62mm PZ handle with 240mm screw centres**
Suits older locking systems
- **Baseplate common with all Blenheim handles**
Same routing detail regardless of product variant chosen
- **Supplied with care instructions**
Helps the homeowner to keep the hardware in optimal condition
- **Supplied fully assembled**
Simple and quick installation, no need to fit springs or lever
- **Each part packaged in a separate chamber, but supplied as a set**
No scratching of parts during transit



Hardex
Chrome



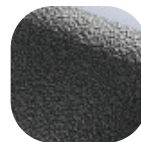
Hardex
Gold



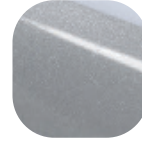
Hardex
Bronze



White



Antique
Black



Silver



Black

Blenheim Offset Lever Pad

Ordering Details

Product

Blenheim Offset Lever Pad

Finish

Part No.

Hardex Chrome	1H051
Hardex Bronze	1H053
Hardex Gold	1H055
Antique Black	1D156
White	1C050
Black	1C051
Silver	1C052

Technical Information

Corrosion resistance

Meets the requirements of BS EN 1670:2007 Grade 5 (480 hours)

Operation

Endurance tested in excess of 200,000 cycles

Performance

Tested to meet the requirements of PAS 24 as part of a compliant door set

Material Specification

Handle Grip and Backplate: High quality Zinc for all Hardex finishes and Antique Black. High quality Aluminium for White, Black and Silver finishes

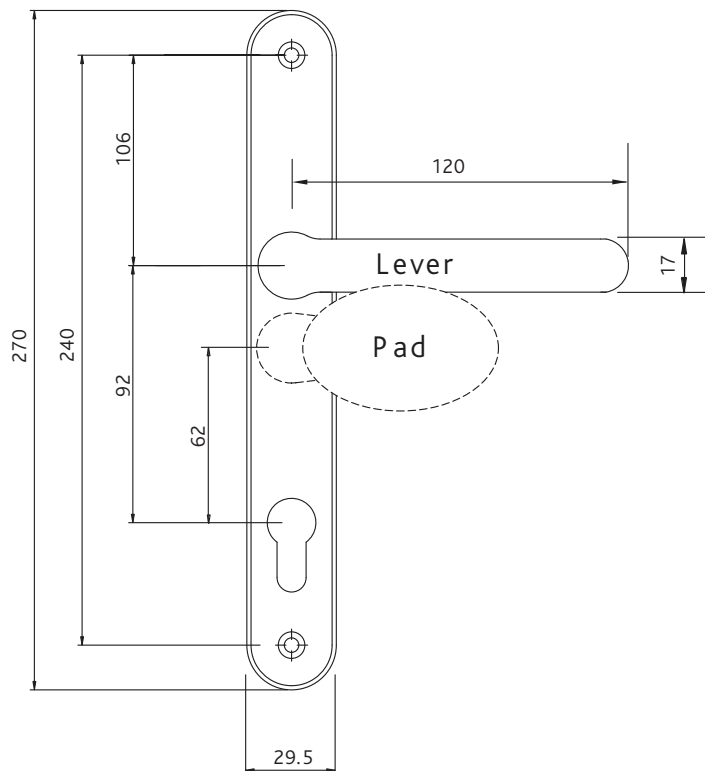
Coatings: Hardex Chrome, Hardex Bronze, Hardex Gold, Antique Black, White, Black and Silver

Screws: Machine screws with colour coordinated heads for handle. 60mm - 70mm profiles (1 x 8mm x 120mm spindle, 2 x M5 x 70mm and 2x M5 x 80mm screws)

Cylinder: Euro Cylinder, 92mm / 62mm PZ

Maintenance

For continued protection of the quality finish and appearance, we advise routine cleaning of all our external hardware. We recommend wiping it with a clean cloth soaked in warm water and mild detergent every month. Please refrain from using heavy-duty cleaners, containing Chlorine or Potassium. Moving parts should also be lightly lubricated using a light non-acidic mineral oil (e.g., "3 in 1") at least twice per year. The product may need to be adjusted and fixings tightened to ensure a satisfactory operation. This procedure is particularly essential if products are used within a 25-mile radius of coastal areas or close proximity to building sites or large industrial areas, where more frequent cleaning may be required to prevent the accumulation of corrosive contaminants.



All dimensions are in mm and are nominal.
Fab&Fix reserves the right to change specification without notice.
It is the responsibility of the door manufacturer to ensure that the finished product meets any required safety and performance specification.

Packaging

Handles

Individually bagged with screws and care instructions.
15 handles in an outer box.